

APPROVED
BY ORANGE COUNTY BOARD
OF COUNTY COMMISSIONERS

AUG 19 2003 *gjs*

RESOLUTION

of the

ORANGE COUNTY BOARD OF COUNTY COMMISSIONERS

regarding the

APPROVAL OF THE ACCEPTANCE OF SURPLUS REAL PROPERTY FROM THE FLORIDA DEPARTMENT OF TRANSPORTATION

Resolution No. 2003-M-28

WHEREAS, the Florida Department of Transportation (the "Department") owns a parcel of real property adjacent to Old Cheney Road right-of-way which was previously used as a borrow pit by the Department (the "Borrow Pit Parcel"), more particularly depicted on Exhibit "A"; and

WHEREAS, Orange County (the "County") is planning to approve a realignment of Old Cheney Highway (The "Realignment"); and

WHEREAS, the Realignment requires the use of a small portion (the "Realignment Parcel") of the northeast corner of the Borrow Pit Parcel as more particularly depicted on Exhibit "B"; and

WHEREAS, the Realignment will re-route traffic to and from Columbia Elementary School, and the County has determined that such realignment will result in safer access to Columbia Elementary School; and

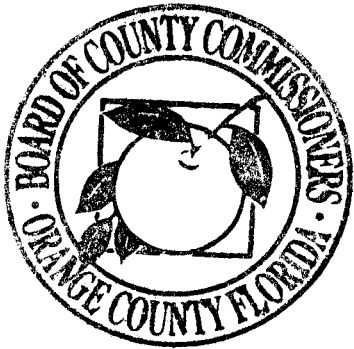
WHEREAS, the Department is willing to convey the Realignment Parcel to the County.

NOW, THEREFORE, BE IT RESOLVED BY THE BOARD OF COUNTY COMMISSIONERS OF ORANGE COUNTY, FLORIDA:

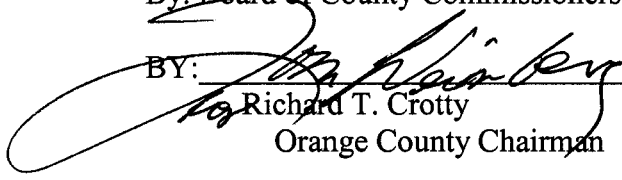
1. The recitals stated above are true and correct and are hereby incorporated into this Resolution.
2. The realignment of Old Cheney Highway serves a public purpose in that it will improve safety.
3. The County's acquisition of the Realignment Parcel is necessary to accomplish the Realignment.

4. The County Chairman is hereby authorized to accept the conveyance of the Realignment Parcel on behalf of the County and to execute any documents necessary to complete such conveyance.

ADOPTED THIS 19th DAY OF August, 2003.



ORANGE COUNTY, FLORIDA
By: Board of County Commissioners

BY: 
Richard T. Crotty
Orange County Chairman

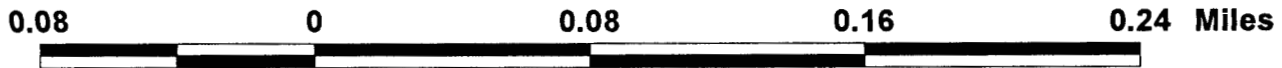
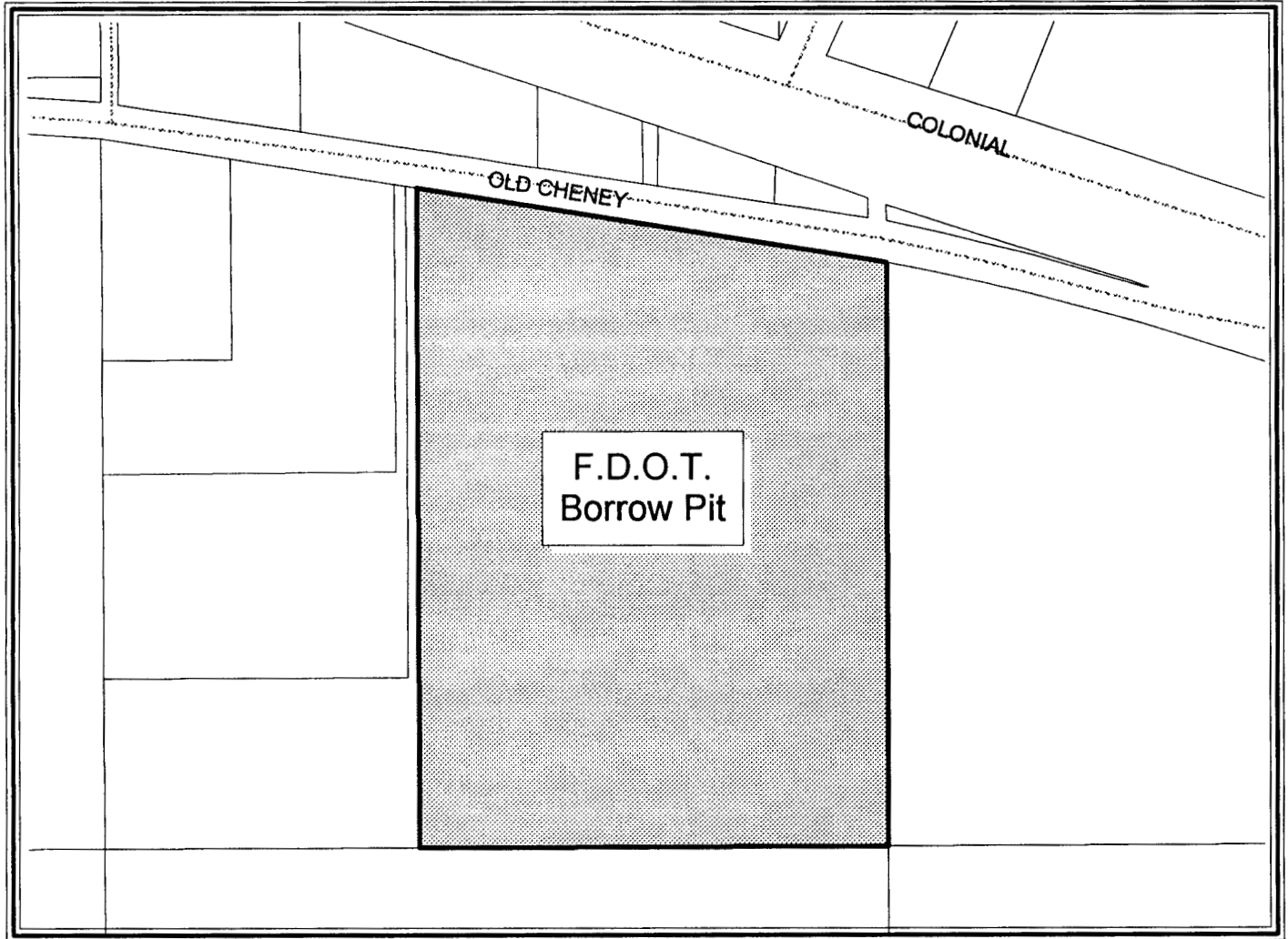
ATTEST: Martha O. Haynie, County Comptroller
As Clerk of the Board of County Commissioners

BY: 
Deputy Clerk

EXHIBIT A



Legal Description:
E 788.29 FT OF NW 1/4 OF SE 1/4 LYING S OF
HWY IN SEC 20-22-32 O.R.3622 PAGE 2118 & 2120



This Map was Prepared by: Orange County, Survey Section
Drawn By: C. Zimmerman on 8/01/03

SKETCH OF DESCRIPTION

SHEET 1 OF 2

LAND DESCRIPTION:

A PARCEL OF LAND LYING IN SECTION 20, TOWNSHIP 22 SOUTH, RANGE 32 EAST, ORANGE COUNTY, FLORIDA BEING MORE PARTICULARLY DESCRIBED AS FOLLOWS:

COMMENCE AT THE SOUTHEAST CORNER OF SECTION 20, TOWNSHIP 22 SOUTH, RANGE 32 EAST; THENCE N00°47'28"E ALONG THE EAST LINE OF THE SOUTHEAST QUARTER OF SAID SECTION 20 A DISTANCE OF 1328.84 FEET; THENCE N89°01'50"W ALONG THE SOUTH LINE OF THE NORTHEAST QUARTER OF THE SOUTHEAST QUARTER OF SAID SECTION 20 A DISTANCE OF 1285.57 FEET; THENCE N00°46'24"E ALONG THE WEST LINE OF THE NORTHEAST QUARTER OF THE SOUTHEAST QUARTER OF SAID SECTION 20 A DISTANCE OF 853.15 FEET TO THE POINT OF BEGINNING, SAME BEING THE BEGINNING OF A CURVE CONCAVE TO THE SOUTHWEST HAVING A RADIUS OF 199.26 FEET AND A CHORD BEARING OF N37°22'45"W; THENCE NORTHWESTERLY ALONG THE ARC OF SAID CURVE THROUGH A CENTRAL ANGLE OF 76°18'34" A DISTANCE OF 265.38 FEET TO A POINT ON THE SOUTHERLY RIGHT-OF-WAY LINE OF OLD CHENEY HIGHWAY SAME BEING A POINT ON A NON-TANGENT CURVE CONCAVE SOUTHERLY HAVING A RADIUS OF 11129.64 FEET AND A CHORD BEARING OF S75°32'02"E; THENCE SOUTHEASTERLY ALONG SAID SOUTHERLY RIGHT-OF-WAY AND THE ARC OF SAID CURVE THROUGH A CENTRAL ANGLE OF 00°48'21" A DISTANCE OF 156.55 FEET; THENCE S00°46'24"W ALONG THE AFORESAID WEST LINE OF THE NORTHEAST QUARTER OF THE SOUTHEAST QUARTER A DISTANCE OF 156.55 FEET TO THE POINT OF BEGINNING.
SAID LANDS LYING IN ORANGE COUNTY, FLORIDA AND CONTAINING 0.110 ACRES MORE OR LESS.

Exhibit B

Notes:

1. "NOT VALID WITHOUT THE SIGNATURE AND THE ORIGINAL RAISED SEAL OF A FLORIDA LICENSED SURVEYOR AND MAPPER".
2. BEARINGS SHOWN HEREON ARE BASED ON ASSUMED DATUM AND RELATIVE TO THE EAST LINE OF THE S.E. 1/4 OF SEC. 20-22-32 BEING N00°47'28"E.
3. LEGAL DESCRIPTION SHOWN HEREON WAS PREPARED BY THE SURVEYOR.
4. THIS SKETCH DOES NOT REPRESENT A FIELD SURVEY AS SUCH.
5. THIS IS NOT A BOUNDARY SURVEY.
6. SKETCH REVISED TO REFLECT INFORMATION FROM F.D.O.T. RIGHT-OF-WAY MAP 75000-9502 (4/07/88).

Legend and Abbreviations:

DUSE	= Drainage, Sidewalk, Landscape and Utility Easements	CB	= Chord Bearing
DE	= Drainage Easement	NR	= Not Radial
PC	= Point of Curvature	.	= PCP or Permanent Control Point
PT	= Point of Tangency	PRM	= Permanent Reference Monument
PI	= Point of Intersection	R/W	= Right of Way
RP	= Radius Point	C##	= Curve Number (See Curve Data Table)
CM	= Concrete Monument, 4" x 4" Unless otherwise shown	L##	= Line Number (See Line Data Table)
RC	= Rebar and Cap, Set LB #3897 Unless otherwise shown	PB	= Plat Book
Δ	= Delta or Central Angle of Curve	PG	= Page
R	= Radius of Curve	REC	= Recovered
T	= Tangent of Curve	SB	= Building Setback Line
L	= Arc Length	.	= Center Line
C	= Chord Length	m	= measured
O.R.	= Official Records Book		
Pg.	= Page		

PREPARED FOR:

PAUL LINDER

PROJECT# 491001

DATE : 03/25/03 REVISED 07/07/03

DWG. FILE: J:\DATA\491001\SURVEY\ADD RW.DWG.

SHEET 1 OF 2

Surveyor's Certification

I, THE UNDERSIGNED, HEREBY CERTIFY THAT THE SKETCH OF DESCRIPTION AS SHOWN HEREON WAS PREPARED UNDER MY DIRECTION AND MEETS OR EXCEEDS THE MINIMUM TECHNICAL STANDARDS FOR SURVEYS SET FORTH IN CHAPTER 61G17-8, FLORIDA ADMINISTRATIVE CODE, PURSUANT TO SECTION 472.027, FLORIDA STATUTES.

FOR THE FIRM BY

KEVIN J. INGRAM, PSM
FLORIDA REGISTRATION No. 4157



HOLLIS ENGINEERING, INC.
Civil Engineering
Land Surveying

605 E. Robinson St., Suite 450 Orlando, Florida 32801 (407) 422-1118
LB # 3897

SKETCH OF DESCRIPTION

SHEET 2 OF 2

OLD CHENEY HIGHWAY

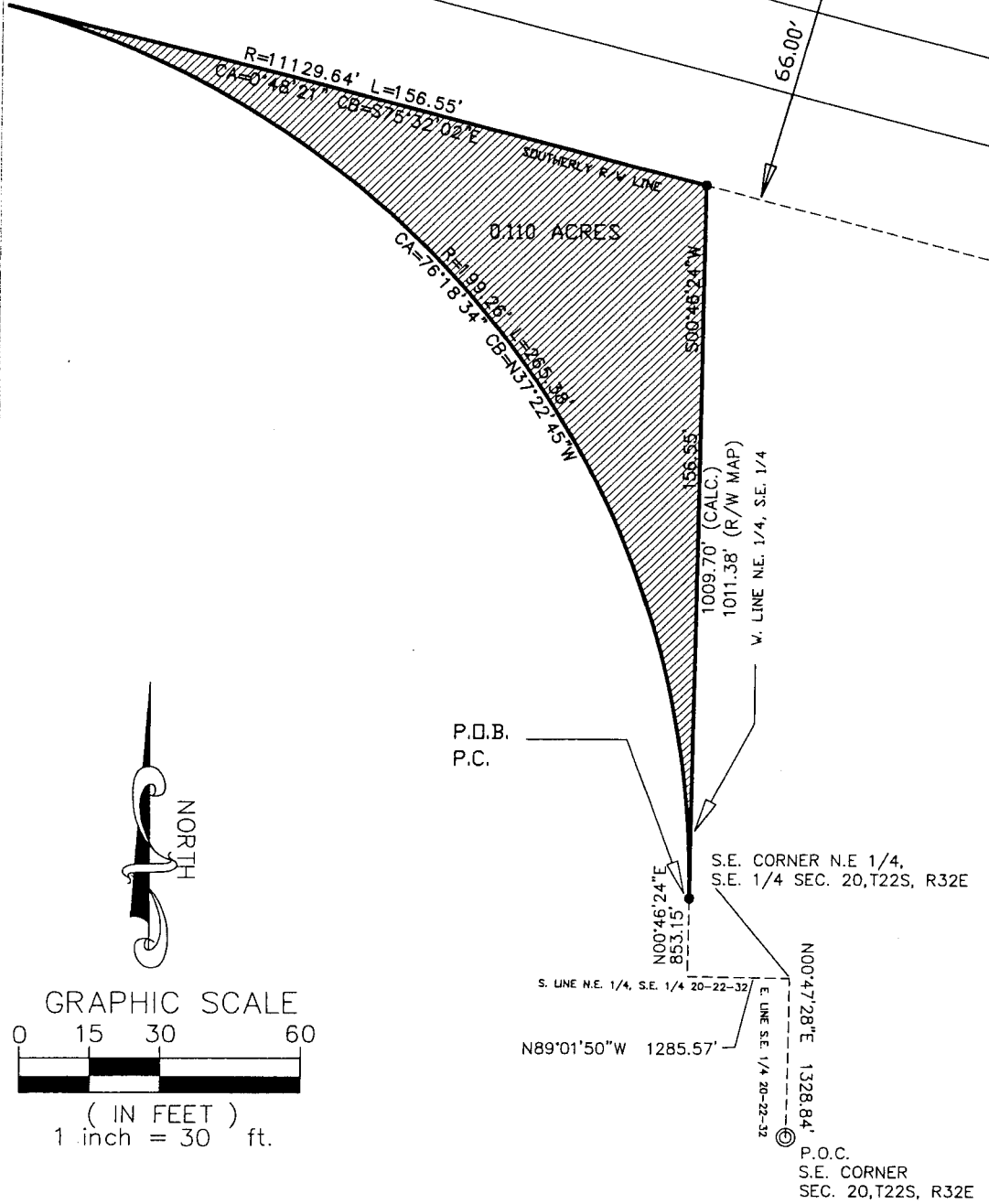


Exhibit B

PREPARED FOR:

PAUL LINDER

PROJECT# 491001

DATE : 03/25/03

DWG. FILE: J:\DATA\491001\SURVEY\ADD RW.DWG.

SHEET 2 OF 2



HOLLIS ENGINEERING, INC.

Civil Engineering

Land Surveying

605 E. Robinson St., Suite 450 Orlando, Florida 32801 (407) 422-1118
LB # 3897

Revisions

DATE:	DESCRIPTION	BY:
03/25/03	SKETCH OF DESCRIPTION	KJI
07/07/03	REVISED	KJI
07/16/03	REVISED	KJI