

APPROVED
BY ORANGE COUNTY BOARD
OF COUNTY COMMISSIONERS
JUL 29 2008 JB/NP/R

RESOLUTION

of the
ORANGE COUNTY BOARD OF COUNTY COMMISSIONERS
regarding
**AUTHORIZATION TO CONVEY CERTAIN
COUNTY PROPERTY AND ACCEPT CORRECTIVE DEEDS
PURSUANT TO DEVELOPMENT REQUIREMENTS**

Resolution No. 2008-M-28

WHEREAS, Orange County, a political subdivision of the State of Florida, has authority to adopt and implement certain land development regulations and to acquire interests in real property; and

WHEREAS, in 1999, the Board of County Commissioners approved the Stillwater Crossings and Center Bridge Neighborhood PD, implementing an Adequate Public Facilities (APF) Agreement between the Developer and the County; and

WHEREAS, the APF Agreement provided for the conveyances to County by Developer of certain property to be utilized as water treatment plant and park and school sites; and

WHEREAS, the County subsequently conveyed a portion of the property to the Orange County School Board for use as a school site; and

WHEREAS, the Developer has reconfigured the property conveyed to the County, based upon final project engineering plans, and the Developer has asked, pursuant to the provision in the APF Agreement, that the County and School Board convey the property back to the Developer, who will simultaneously convey the reconfigured sites back to the County and School Board.

NOW THEREFORE, BE IT RESOLVED BY THE BOARD OF COUNTY COMMISSIONERS OF ORANGE COUNTY:

1. The foregoing recitals are incorporated herein.
2. The Board hereby determines that, pursuant to the conveyances and APF Agreement approved by the County in 2000 and 2002, and the fact that the Property has been reconfigured based upon final engineering plans, the Property conveyed to the County by Developer in 2000 and 2002 described on Exhibit "A" should be conveyed back to the Developer in return for conveyance by the Developer to the County of the properly configured real property described on Exhibit "B".
3. The Board hereby directs that all of the County's right, title and interest in the Property conveyed in 2000 and 2002 and currently owned by the County be conveyed to Summerport Land Company (successor to the grantor), and that the Orange County Mayor execute and deliver the Statutory County Deeds to effectuate such conveyances, and that staff do all things necessary and appropriate to conclude these transactions.
4. The Board hereby approves and accepts Special Warranty Deeds from Summerport Land Company to Orange County and authorizes the Mayor and authorized staff to perform all action necessary and incidental to closing and recording instruments of conveyance.
5. The Board hereby directs that certified copies of this Resolution be forwarded forthwith to the Developer and the Orange County School Board.

6. This Resolution shall become effective upon its adoption by the Board.

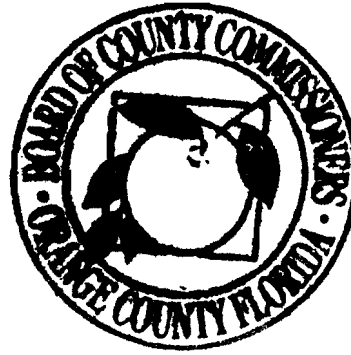
ADOPTED this 29th day of July, 2008.

ORANGE COUNTY, FLORIDA
By: Board of County Commissioners

By: *Richard T. Crotty*
Richard T. Crotty
Orange County Mayor

ATTEST: Martha O. Haynie, County Comptroller
As Clerk of the Board of County Commissioners

By: *Martha O. Haynie*
Deputy Clerk



SKETCH OF DESCRIPTION

LEGAL DESCRIPTION: (APF Neighborhood & Village Center Park)

A portion of land lying in Section 14, Township 23 South, Range 27 East, lying in Orange County, Florida.

Being more particularly described as follows:

Commence at the Southwest corner of said Section 14; thence run North 89°44'04" East along the South line of the Southwest 1/4 of said Section 14 for a distance of distance of 1219.64 feet to the POINT OF BEGINNING; thence departing said South line, run North 00°05'57" East for a distance of 201.31 feet; thence run South 89°48'08" West for a distance of 156.41 feet; thence run North 73°53'20" East for a distance of 19.19 feet; thence run North 54°41'22" East for a distance of 52.76 feet; thence run North 17°15'11" East for a distance of 49.73 feet; thence run North 08°51'16" East for a distance of 97.57 feet; thence run North 00°08'03" West for a distance of 66.69 feet; thence run North 04°43'12" West for a distance of 73.56 feet; thence run North 12°32'19" West for a distance of 44.79 feet; thence run North 36°28'12" West for a distance of 64.95 feet; thence run North 40°42'14" West for a distance of 40.76 feet; thence run North 41°42'21" West for a distance of 63.59 feet; thence run North 39°25'56" West for a distance of 59.90 feet; thence run North 30°01'55" West for a distance of 59.26 feet; thence run North 43°39'22" West for a distance of 19.68 feet; thence run North 17°06'43" East for a distance of 250.00 feet; thence run North 72°10'01" West for a distance of 214.43 feet; thence run North 21°13'55" West for a distance of 595.84 feet; thence run North 78°36'47" East for a distance of 515.61 feet; thence run South 35°42'00" East for a distance of 31.30 feet; thence run South 12°17'24" East for a distance of 97.46 feet; thence run South 05°43'05" East for a distance of 101.14 feet; thence run South 20°03'45" East for a distance of 107.04 feet; thence run South 39°06'11" East for a distance of 104.18 feet; thence run South 49°26'11" East for a distance of 78.56 feet to a point on the West line of Fountain Grove according to the plat thereof as recorded in Plat Book 28, Page 112 of the Public Records of Orange County, Florida also being the East line of the West 1/2 of the Southwest 1/4 of said Section 14; thence run South 00°02'04" West along said Westerly and said East line for a distance of 1389.85 feet to a point on a non tangent curve concave Southerly and having a radius of 424.83 feet; thence from a tangent bearing of North 75°06'02" West run Westerly along said curve through a central angle of 13°39'46" for an arc distance of 101.31 feet; thence run North 00°05'57" East for a distance of 60.98 feet to aforesaid POINT OF BEGINNING.

Contains 13.470 acres, more or less.



1420 East Robinson Street
Orlando, Florida 32801 • (407) 897-1443

SURVEYOR'S NOTES:

sk13

THIS IS NOT A SURVEY.

BEARINGS SHOWN HEREON ARE BASED ON THE SOUTH LINE OF THE SOUTHWEST 1/4 OF SECTION 14--23-27 AS BEING N 89°44'04" E, AN ASSUMED BEARING FOR ANGULAR DESIGNATION ONLY

THIS SKETCH IS NOT VALID WITHOUT THE SIGNATURE AND ORIGINAL RAISED SEAL OF A FLORIDA LICENSED SURVEYOR AND MAPPER.

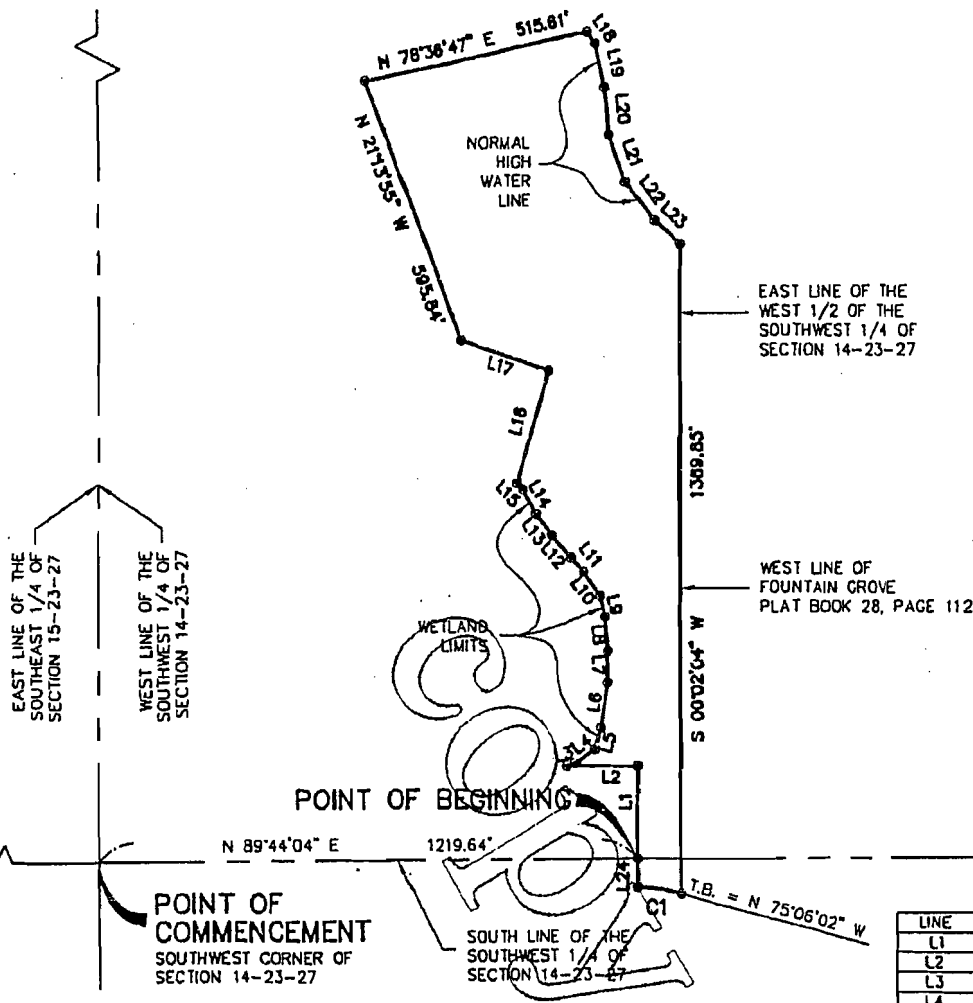
JOB NO. 98043
DATE: 4-13-00
SCALE: 1" = 400 FEET
FIELD BY: N/A

CALCULATED BY: JLR
DRAWN BY: PJR
CHECKED BY: JLR

FOR THE LICENSED BUSINESS # 6723 BY:

JAMES L. RICKMAN P.S.M. # 5633

SKETCH OF DESCRIPTION



POINT OF COMMENCEMENT
SOUTHWEST CORNER OF
SECTION 14-23-27

N 89°44'04" E 1219.64'

POINT OF BEGINNING

SOUTH LINE OF THE
SOUTHWEST 1/4 OF
SECTION 14-23-27

T.B. = N 75°06'02" W

CURVE TABLE

| CURVE | RADIUS | LENGTH | CHORD | BEARING | DELTA |
|-------|---------|---------|---------|---------------|-----------|
| C1 | 424.83' | 101.31' | 101.07' | N 81°55'55" W | 13°39'46" |

LINE TABLE

| LINE | DIRECTION | DISTANCE |
|------|---------------|----------|
| L1 | N 00°05'57" E | 201.31' |
| L2 | S 89°48'08" W | 156.41' |
| L3 | N 73°53'20" E | 19.19' |
| L4 | N 54°41'22" E | 52.76' |
| L5 | N 17°15'11" E | 49.73' |
| L6 | N 08°51'16" E | 97.57' |
| L7 | N 00°08'03" W | 66.69' |
| L8 | N 04°43'12" W | 73.56' |
| L9 | N 12°32'19" W | 44.79' |
| L10 | N 36°28'12" W | 64.95' |
| L11 | N 40°42'14" W | 40.76' |
| L12 | N 41°42'21" W | 63.59' |
| L13 | N 39°25'56" W | 59.90' |
| L14 | N 30°01'55" W | 59.26' |
| L15 | N 43°39'22" W | 19.68' |
| L16 | N 17°06'43" E | 250.00' |
| L17 | N 72°10'01" W | 214.43' |
| L18 | S 35°42'00" E | 31.30' |
| L19 | S 12°17'24" E | 97.46' |
| L20 | S 05°43'05" E | 101.14' |
| L21 | S 20°03'45" E | 107.04' |
| L22 | S 39°06'11" E | 104.18' |
| L23 | S 49°26'11" E | 78.56' |
| L24 | N 00°05'57" E | 60.98' |



1420 East Robinson Street
Orlando, Florida 32801 • (407) 897-1443

THIS IS NOT A SURVEY

sk13

⊙ DENOTES CHANGE IN DIRECTION
TB DENOTES TANGENT BEARING

JOB NO. 98043
DATE: 4-13-00
SCALE: 1" = 400 FEET
FIELD BY: N/A

CALCULATED BY: JLR
DRAWN BY: PJR
CHECKED BY: JLR

EXHIBIT "A"

Park

A portion of Section 15, Township 23 South, Range 27 East, Orange County, Florida.

Being more particularly described as follows:

Commence at the Northwest corner of the Northwest 1/4 of aforesaid Section 15; thence run North 89°38'00" East along the North line of said Northwest 1/4 of Section 15 for a distance of 1915.56 feet; thence departing said North line run South 00°00'00" West for a distance of 2301.77 feet to the POINT OF BEGINNING; thence run North 75°34'39" East for a distance of 779.71 feet to a point on a non tangent curve having a radius of 4445.60 feet; thence from a tangent bearing of South 04°25'56" East run Southerly along said curve through a central angle of 01°21'47" for an arc distance of 105.76 feet to a point on a non tangent curve concave Southeasterly and having a radius of 75.00 feet; thence from a tangent bearing of South 63°17'58" West run Southwesterly along said curve through a central angle of 55°20'55" for an arc distance of 72.45 feet to a point on a non tangent curve concave Southeasterly and having a radius of 828.00 feet; thence from a tangent bearing of South 74°12'40" West run Southwesterly along said curve through a central angle of 36°22'13" for an arc distance of 525.60 feet to a point of reverse curvature of a curve Northwesterly and having a radius of 1472.00 feet; thence run Southwesterly along said curve through a central angle of 10°50'03" for an arc distance of 278.34 feet to a point; thence run North 38°08'48" West for a distance of 217.06 feet; thence run North 01°08'20" East for a distance of 30.09 feet; thence run North 57°18'37" East for a distance of 22.62 feet; thence run North 10°47'32" East for a distance of 34.18 feet; thence run North 07°43'09" West for a distance of 47.78 feet; thence run North 11°19'13" East for a distance of 34.92 feet; thence run North 02°56'51" East for a distance of 31.37 feet; thence run North 15°11'32" East for a distance of 35.48 feet; thence run North 05°39'55" West for a distance of 62.01 feet; thence run North 03°06'54" West for a distance of 3.89 feet to aforesaid POINT OF BEGINNING.

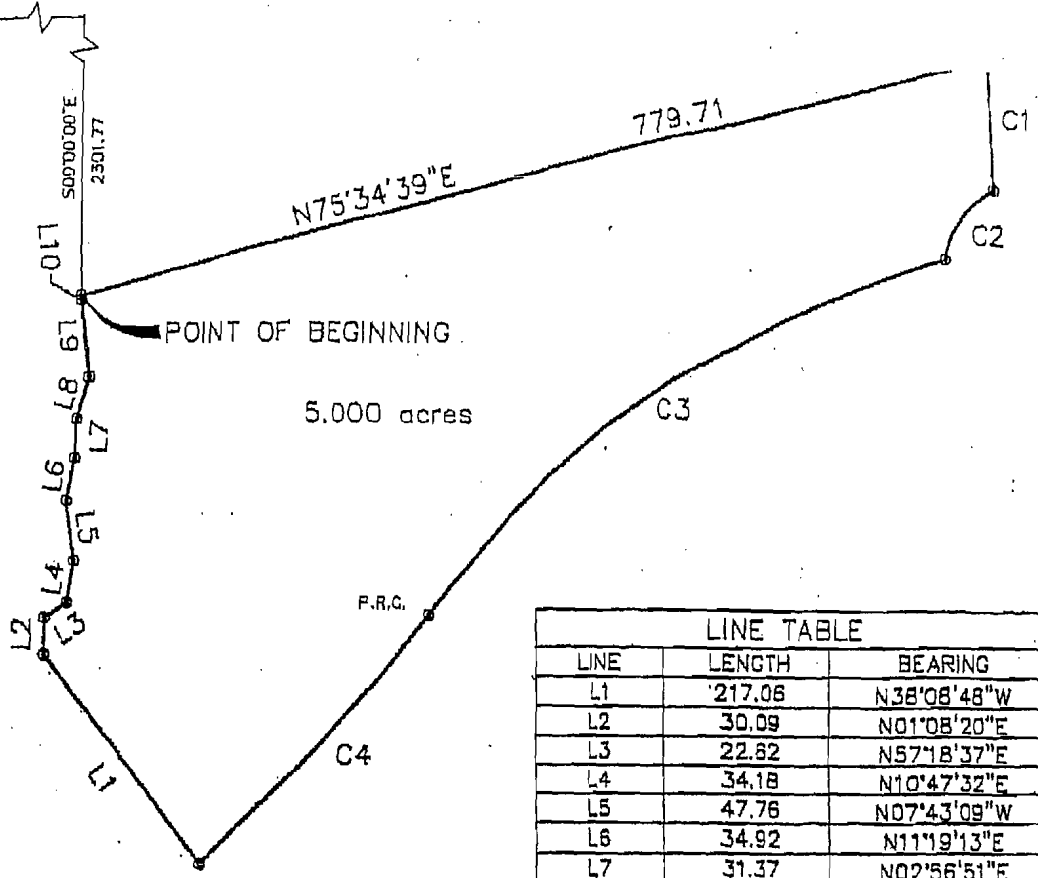
SKETCH OF DESCRIPTION

(PART PARCEL)
POINT OF COMMENCEMENT

NORTHWEST CORNER OF THE
NORTHWEST 1/4 OF
SECTION 15-23-27

N89°38'00"E
1919.56

NORTH LINE OF THE
NORTHWEST 1/4 OF
SECTION 15-23-27



| LINE TABLE | | |
|------------|--------|-------------|
| LINE | LENGTH | BEARING |
| L1 | 217.06 | N38°08'48"W |
| L2 | 30.09 | N01°08'20"E |
| L3 | 22.82 | N57°18'37"E |
| L4 | 34.18 | N10°47'32"E |
| L5 | 47.76 | N07°43'09"W |
| L6 | 34.92 | N11°19'13"E |
| L7 | 31.37 | N02°56'51"E |
| L8 | 35.48 | N16°11'32"E |
| L9 | 62.01 | N05°39'55"W |
| L10 | 3.89 | N03°06'54"W |

| CURVE TABLE | | | | | | |
|-------------|---------|--------|--------|-------------|-----------|-----------------|
| CURVE | RADIUS | LENGTH | CHORD | BEARING | DELTA | TANGENT BEARING |
| C1 | 4445.60 | 105.75 | 105.75 | N03°45'03"W | 1°21'46" | S 04°28'56" E |
| C2 | 75.00 | 72.45 | 69.67 | S35°37'31"W | 56°20'56" | S 63°17'58" W |
| C3 | 828.00 | 525.60 | 516.82 | S56°01'34"W | 36°22'14" | S 74°12'40" W |
| C4 | 1472.00 | 278.34 | 277.93 | N43°15'28"E | 10°50'03" | |

16 East Plant Street
Winter Garden, Florida 34787 • (407) 654 5355

THIS IS NOT A SURVEY:

- ⊙ DENOTES CHANGE IN DIRECTION
- R/W DENOTES RIGHT-OF-WAY
- C DENOTES CENTERLINE
- P.C. DENOTES POINT OF CURVATURE
- P.T. DENOTES POINT OF TANGENCY
- P.R.C. DENOTES POINT OF REVERSE CURVATURE
- P.C.C. DENOTES POINT OF COMPOUND CURVATURE

sk54

| | |
|----------------------|--------------------|
| JOB NO. 98043 | CALCULATED BY: JLR |
| DATE: 9-30-01 | DRAWN BY: PJR |
| SCALE: 1" = 150 FEET | CHECKED BY: JLR |
| FIELD BY: N/A | |

LEGAL DESCRIPTION

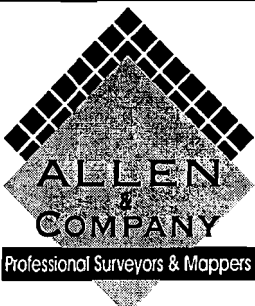
EXHIBIT "B"

A portion of the West 1/2 of the Southwest 1/4 of Section 14, Township 23 South, Range 27 East, Orange County, Florida, and a portion of the Northeast 1/4 of the Northwest 1/4 of the Northwest 1/4 of Section 23, Township 23 South, Range 27 East, Orange County, Florida, being more particularly described as follows:

BEGINNING at the Southeast corner of the Southwest 1/4 of the Southwest 1/4 of Section 14, Township 23 South, Range 27 East, Orange County, Florida; thence run South 00°00'48" East, along the East line of the Northeast 1/4 of the Northwest 1/4 of the Northwest 1/4 of Section 23, Township 23 South, Range 27 East, Orange County, Florida, for a distance of 75.65 feet to a point on a curve, concave Southerly, having a radius of 424.83 feet, a chord bearing of North 81°55'55" West, and a chord distance of 101.07 feet; thence departing said East line, run Westerly along the arc of said curve through a central angle of 13°39'46" for an arc distance of 101.31 feet; thence departing said curve, run North 00°05'57" East, for a distance of 60.98 feet; thence run North 00°05'57" East, for a distance of 201.31 feet; thence run South 89°48'08" West, for a distance of 156.41 feet; thence run North 73°53'20" East, for a distance of 19.19 feet; thence run North 54°41'22" East, for a distance of 52.76 feet; thence run North 17°15'11" East, for a distance of 49.73 feet; thence run North 08°51'16" East, for a distance of 97.57 feet; thence run North 00°08'03" West, for a distance of 66.69 feet; thence run North 04°43'12" West, for a distance of 73.56 feet; thence run North 12°32'19" West, for a distance of 44.79 feet; thence run North 36°28'12" West, for a distance of 64.95 feet; thence run North 40°42'14" West, for a distance of 40.76 feet; thence run North 41°42'21" West, for a distance of 63.59 feet; thence run North 39°25'56" West, for a distance of 59.90 feet; thence run North 30°01'55" West, for a distance of 59.26 feet; thence run North 43°39'22" West, for a distance of 19.68 feet; thence run North 17°06'43" East, for a distance of 250.00 feet; thence run North 72°10'01" West, for a distance of 214.43 feet; thence run South 79°42'21" West, for a distance of 169.57 feet; thence run North 10°17'39" West, for a distance of 583.94 feet; thence run North 78°36'47" East, for a distance of 572.13 feet; thence run South 35°42'00" East, for a distance of 31.30 feet; thence run South 12°17'24" East, for a distance of 97.46 feet; thence run South 05°43'05" East, for a distance of 101.14 feet; thence run South 20°03'45" East, for a distance of 107.04 feet; thence run South 39°06'11" East, for a distance of 104.18 feet; thence run South 49°26'11" East, for a distance of 77.41 feet to a point on the East line of the West 1/2 of the Southwest 1/4 of said Section 14; thence run South 00°00'13" East, along said East line, for a distance of 1,314.97 feet to the POINT OF BEGINNING.

Containing 652,319.29 square feet, or 14.98 acres, more or less.

SHEET 1 OF 3



16 East Plant Street
Winter Garden, Florida 34787 * (407) 654-5355

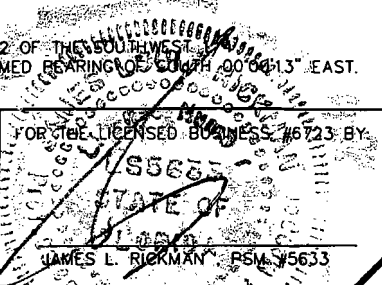
SURVEYOR'S NOTES:

1. THIS IS NOT A SURVEY.
2. THIS SKETCH IS NOT VALID WITHOUT THE SIGNATURE AND ORIGINAL RAISED SEAL OF A FLORIDA LICENSED SURVEYOR AND MAPPER.
3. BEARINGS SHOWN HEREON ARE BASED ON THE EAST LINE OF THE WEST 1/2 OF THE SOUTHWEST 1/4 OF SECTION 14, TOWNSHIP 23 SOUTH, RANGE 27 EAST, AS BEING AN ASSUMED BEARING OF SOUTH 00°00'13" EAST.

98043D\SKETCHES\SK CB-23.DWG
Rev 1-25-08

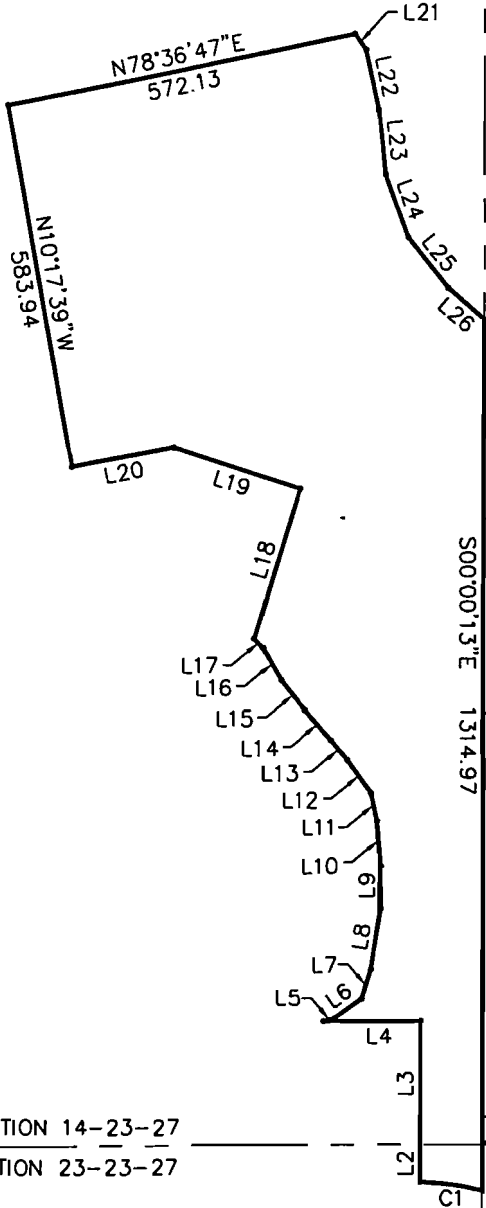
JOB NO. 98043
DATE: 5/16/06
SCALE: 1 INCH = 300 FEET
FIELD BY: N/A

CALCULATED BY: EGT
DRAWN BY: EGT
CHECKED BY: JLR



SKETCH OF DESCRIPTION

EXHIBIT "B"



EAST LINE OF THE WEST 1/2 OF THE SOUTHWEST 1/4 OF SECTION 14-23-27

LAKE CAWOOD ESTATES

FOUNTAIN GROVE

POINT OF BEGINNING SOUTHEAST CORNER OF THE SOUTHWEST 1/4 OF THE SOUTHWEST 1/4 OF SECTION 14-23-27

SECTION 14-23-27
SECTION 23-23-27

EAST LINE OF THE NORTHEAST 1/4 OF THE NORTHWEST 1/4 OF THE NORTHWEST 1/4 OF SECTION 23-23-27

SHEET 2 OF 3

98043D\SKETCHES\SK CB-23.DWG
Rev 1-25-08

SURVEYOR'S NOTES:

1. THIS IS NOT A SURVEY.
2. THIS SKETCH IS NOT VALID WITHOUT THE SIGNATURE AND ORIGINAL RAISED SEAL OF A FLORIDA LICENSED SURVEYOR AND MAPPER.
3. BEARINGS SHOWN HEREON ARE BASED ON THE EAST LINE OF THE WEST 1/2 OF THE SOUTHWEST 1/4 OF SECTION 14, TOWNSHIP 23 SOUTH, RANGE 27 EAST, AS BEING AN ASSUMED BEARING OF SOUTH 00°00'13" EAST.

| | |
|--------------------------------------|--------------------------------|
| JOB NO. _____ 98043 _____ | CALCULATED BY: _____ EGT _____ |
| DATE: _____ 5/16/06 _____ | DRAWN BY: _____ EGT _____ |
| SCALE: _____ 1 INCH = 300 FEET _____ | CHECKED BY: _____ JLR _____ |
| FIELD BY: _____ N/A _____ | |



16 East Plant Street
Winter Garden, Florida 34787 • (407) 654-5355

LINE AND CURVE TABLES

EXHIBIT "B"

| LINE TABLE | | |
|------------|---------|-------------|
| LINE | LENGTH | BEARING |
| L1 | 75.65' | S00°00'48"E |
| L2 | 60.98' | N00°05'57"E |
| L3 | 201.31' | N00°05'57"E |
| L4 | 156.41' | S89°48'08"W |
| L5 | 19.19' | N73°53'20"E |
| L6 | 52.76' | N54°41'22"E |
| L7 | 49.73' | N17°15'11"E |
| L8 | 97.57' | N08°51'16"E |
| L9 | 66.69' | N00°08'03"W |
| L10 | 73.56' | N04°43'12"W |
| L11 | 44.79' | N12°32'19"W |
| L12 | 64.95' | N36°28'12"W |
| L13 | 40.76' | N40°42'14"W |
| L14 | 63.59' | N41°42'21"W |
| L15 | 59.90' | N39°25'56"W |
| L16 | 59.26' | N30°01'55"W |
| L17 | 19.68' | N43°39'22"W |
| L18 | 250.00' | N17°06'43"E |
| L19 | 214.43' | N72°10'01"W |
| L20 | 169.57' | S79°42'21"W |
| L21 | 31.30' | S35°42'00"E |
| L22 | 97.46' | S12°17'24"E |
| L23 | 101.14' | S05°43'05"E |
| L24 | 107.04' | S20°03'45"E |
| L25 | 104.18' | S39°06'11"E |
| L26 | 77.41' | S49°26'11"E |

| CURVE TABLE | | | | | |
|-------------|---------|---------|---------|---------------|-----------|
| CURVE | RADIUS | LENGTH | CHORD | CHORD BEARING | DELTA |
| C1 | 424.83' | 101.31' | 101.07' | N81°55'55"W | 13°39'46" |

SHEET 3 OF 3



16 East Plant Street
Winter Garden, Florida 34787 • (407) 654-5355

SURVEYOR'S NOTES:

98043D\SKETCHES\SK CB-23.DWG
Rev 1-25-08

1. THIS IS NOT A SURVEY.
2. THIS SKETCH IS NOT VALID WITHOUT THE SIGNATURE AND ORIGINAL RAISED SEAL OF A FLORIDA LICENSED SURVEYOR AND MAPPER.
3. BEARINGS SHOWN HEREON ARE BASED ON THE EAST LINE OF THE WEST 1/2 OF THE SOUTHWEST 1/4 OF SECTION 14, TOWNSHIP 23 SOUTH, RANGE 27 EAST, AS BEING AN ASSUMED BEARING OF SOUTH 00°00'13" EAST.

| | |
|---------------------------------|---------------------------|
| JOB NO. <u>98043</u> | CALCULATED BY: <u>EGT</u> |
| DATE: <u>5/16/06</u> | DRAWN BY: <u>EGT</u> |
| SCALE: <u>1 INCH = 300 FEET</u> | CHECKED BY: <u>JLR</u> |
| FIELD BY: <u>N/A</u> | |

LEGAL DESCRIPTION

EXHIBIT "B"

A portion of the West 1/2 of Section 15, Township 23 South, Range 27 East, Orange County, Florida, being more particularly described as follows:

COMMENCING at the West 1/4 corner of Section 15, Township 23 South, Range 27 East, Orange County, Florida; thence run North 89°41'25" East, along the South line of the Northwest 1/4 of said Section 15, for a distance of 1789.83 feet to the POINT OF BEGINNING; thence departing said South line, run North 60°45'51" West, for a distance of 18.42 feet; thence run North 11°33'55" East, for a distance of 15.11 feet; thence run North 74°21'47" East, for a distance of 44.53 feet; thence run North 35°45'00" East, for a distance of 48.66 feet; thence run South 55°01'57" East, for a distance of 39.79 feet; thence run North 57°18'37" East, for a distance of 50.12 feet; thence run North 10°47'32" East, for a distance of 49.00 feet; thence run North 07°43'09" West, for a distance of 47.65 feet; thence run North 11°19'13" East, for a distance of 32.56 feet; thence run North 02°56'51" East, for a distance of 30.30 feet; thence run North 16°11'32" East, for a distance of 37.41 feet; thence run North 05°39'55" West, for a distance of 66.28 feet; thence run North 03°06'54" West, for a distance of 53.58 feet; thence run North 01°48'42" West, for a distance of 32.36 feet; thence run North 04°23'50" West, for a distance of 47.52 feet; thence run North 04°14'53" West, for a distance of 47.25 feet; thence run North 04°04'09" West, for a distance of 59.68 feet; thence run North 03°21'54" West, for a distance of 47.08 feet; thence run North 02°50'50" West, for a distance of 58.82 feet; thence run North 07°38'49" West, for a distance of 56.25 feet; thence run North 10°42'38" West, for a distance of 84.45 feet; ~~thence run North 10°32'05" West, for a distance of 69.87 feet; thence run North 06°55'02" West, for a distance of 41.90 feet; thence run North 15°09'03" West, for a distance of 29.72 feet; thence run North 10°14'41" West, for a distance of 82.12 feet; thence run North 10°07'59" West, for a distance of 70.34 feet; thence run North 10°23'51" West, for a distance of 118.50 feet; thence run North 09°24'40" West, for a distance of 93.06 feet to a point on the North line of the Southeast 1/4 of the Northwest 1/4 of said Section 15; thence run North 89°40'21" East, along said North line, for a distance of 20.25 feet; thence run South 09°24'40" East, for a distance of 89.69 feet; thence run South 10°23'51" East, for a distance of 118.38 feet; thence run South 10°07'59" East, for a distance of 70.37 feet; thence run South 10°14'41" East, for a distance of 81.24 feet; thence run South 15°09'03" East, for a distance of 30.31 feet; thence run South 06°55'02" East, for a distance of 42.70 feet; thence run South 10°32'05" East, for a distance of 69.21 feet; thence run South 10°42'38" East, for a distance of 84.95 feet; thence run South 07°38'49" East, for a distance of 57.62 feet; thence run~~

SHEET 1 OF 4



16 East Plant Street
Winter Garden, Florida 34787 (407) 654-5355

SURVEYOR'S NOTES:

98043D\SKETCHES\5K SC-4.DWG

1. THIS IS NOT A SURVEY.
2. THIS SKETCH IS NOT VALID WITHOUT THE SIGNATURE AND ORIGINAL RAISED SEAL OF A FLORIDA LICENSED SURVEYOR AND MAPPER.
3. BEARINGS SHOWN HEREON ARE BASED ON THE NORTH LINE OF THE SOUTHWEST 1/4 OF SECTION 15-23-27 AS BEING AN ASSUMED BEARING OF NORTH 89°41'25" EAST.

JOB NO. 98043
 DATE: 5/23/06
 SCALE: 1 INCH = 300 FEET
 FIELD BY: N/A

CALCULATED BY: EGT
 DRAWN BY: EGT
 CHECKED BY: JLR

FOR THE LICENSED BUSINESS #6723 BY:

[Handwritten Signature]
 JAMES L. RICKMAN, PSM #5633

LEGAL DESCRIPTION

EXHIBIT "B"

South 02°50'50" East, for a distance of 59.56 feet; thence run South 03°21'54" East, for a distance of 46.87 feet; thence run South 04°04'09" East, for a distance of 59.53 feet; thence run South 04°14'53" East, for a distance of 47.20 feet; thence run South 04°23'50" East, for a distance of 47.94 feet; thence run South 01°48'42" East, for a distance of 32.59 feet; thence run South 03°06'54" East, for a distance of 33.38 feet; thence run North 66°00'22" East, for a distance of 556.68 feet; thence run South 03°59'20" East, for a distance of 266.99 feet to a point on a curve, concave Southeasterly, having a radius of 766.54 feet, a chord bearing of North 67°38'44" East, and a chord distance of 82.07 feet; thence run Easterly along the arc of said curve through a central angle of 06°08'13" for an arc distance of 82.11 feet to the point of tangency; thence run North 70°42'51" East, for a distance of 44.38 feet to the point of curvature of a curve, concave Southeasterly, having a radius of 631.00 feet, a chord bearing of North 73°51'03" East, and a chord distance of 69.05 feet; thence run Easterly along the arc of said curve through a central angle of 06°16'24", for an arc distance of 69.09 feet to a point on a curve, concave Northwesterly, having a radius of 35.00 feet, a chord bearing of South 57°08'53" West, and a chord distance of 21.60 feet; thence run Westerly along the arc of said curve through a central angle of 35°56'49" for an arc distance of 21.96 feet to the point of reverse curvature of a curve, concave Southeasterly, having a radius of 624.00 feet, a chord bearing of South 72°55'04" West, and a chord distance of 47.99 feet; thence run Southwesterly along the arc of said curve through a central angle of 04°24'26" for an arc distance of 48.00 feet to the point of tangency; thence run South 70°42'51" West, for a distance of 44.38 feet to the point of curvature of a curve, concave Southeasterly, having a radius of 759.54 feet, a chord bearing of South 55°37'43" West, and a chord distance of 395.36 feet; thence run Southwesterly along the arc of said curve through a central angle of 30°10'16" for an arc distance of 399.96 feet to the point of reverse curvature of a curve, concave Northwesterly, having a radius of 1178.00 feet, a chord bearing of South 53°17'10" West, and a chord distance of 519.68 feet; thence run Southwesterly along the arc of said curve through a central angle of 25°29'10" for an arc distance of 523.99 feet; thence departing said curve, run North 74°54'28" West, for a distance of 44.86 feet; thence run North 72°54'52" West, for a distance of 19.03 feet; thence run North 05°01'42" West, for a distance of 29.22 feet; thence run North 78°06'10 East, for a distance of 39.17 feet thence run North 40°30'50" East, for a distance of 78.32 feet; thence run North 20°53'36" West, for a distance of 61.16 feet; thence run North 60°45'51" West, for a distance of 37.05 feet to the POINT OF BEGINNING.

Containing 255,697.52 square feet, or 5.87 acres, more or less.

SHEET 2 OF 4



16 East Plant Street
Winter Garden, Florida 34787 (407) 654-5355

SURVEYOR'S NOTES:

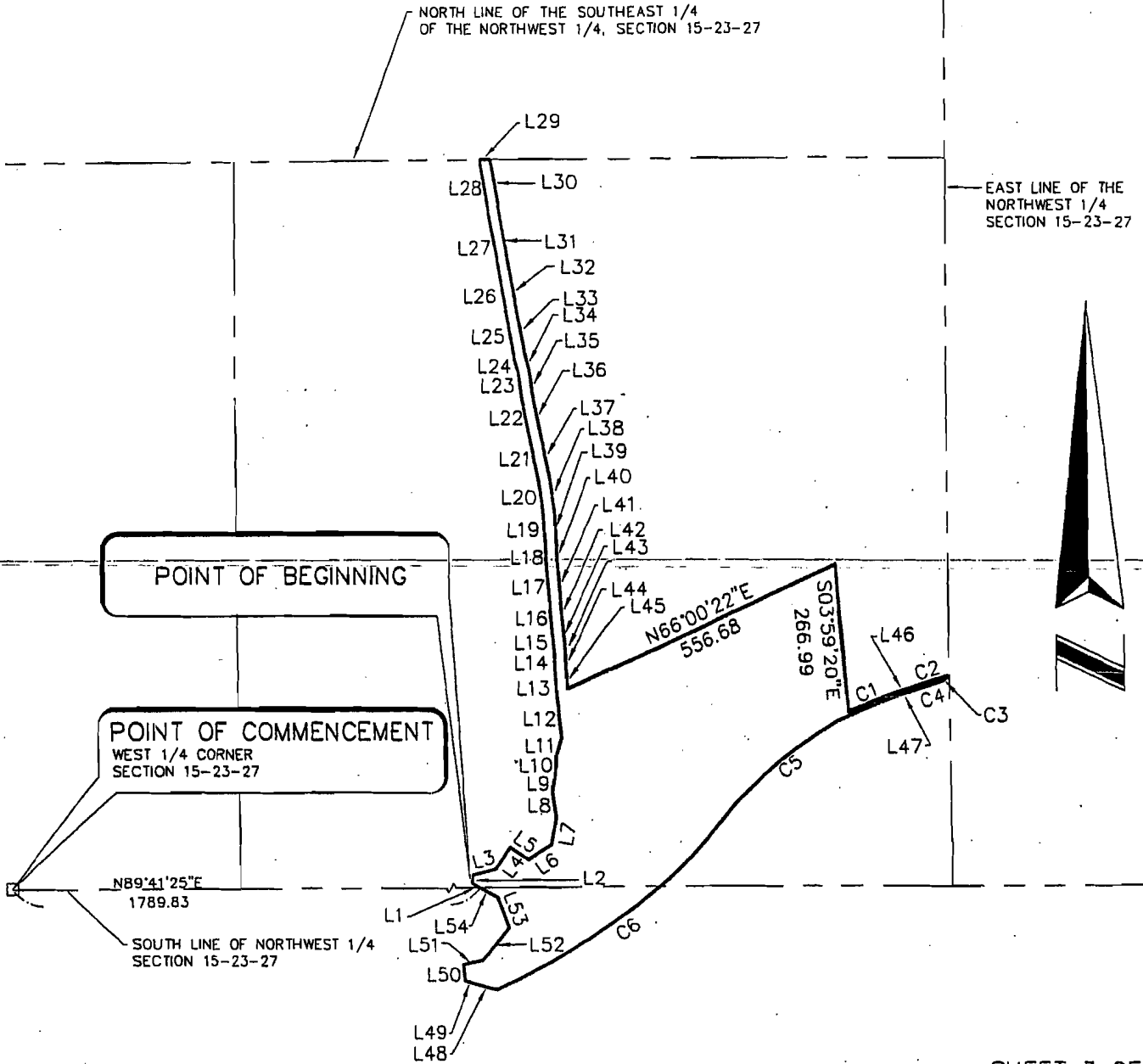
98043D\SKETCHES\SK SC-4.DWG

1. THIS IS NOT A SURVEY.
2. THIS SKETCH IS NOT VALID WITHOUT THE SIGNATURE AND ORIGINAL RAISED SEAL OF A FLORIDA LICENSED SURVEYOR AND MAPPER.
3. BEARINGS SHOWN HEREON ARE BASED ON THE NORTH LINE OF THE SOUTHWEST 1/4 OF SECTION 15-23-27 AS BEING AN ASSUMED BEARING OF NORTH 89°41'25" EAST.

| | |
|--------------------------|--------------------|
| JOB NO. 98043 | CALCULATED BY: EGT |
| DATE: 5/23/06 | DRAWN BY: EGT |
| SCALE: 1 INCH = 300 FEET | CHECKED BY: JLR |
| FIELD BY: N/A | |

SKETCH OF DESCRIPTION

EXHIBIT "B"



SHEET 3 OF 4



16 East Plant Street
Winter Garden, Florida 34787 • (407) 654-5355

SURVEYOR'S NOTES:

98043D\SKETCHES\SK SC-4.DWG

1. THIS IS NOT A SURVEY.
2. THIS SKETCH IS NOT VALID WITHOUT THE SIGNATURE AND ORIGINAL RAISED SEAL OF A FLORIDA LICENSED SURVEYOR AND MAPPER.
3. BEARINGS SHOWN HEREON ARE BASED ON THE NORTH LINE OF THE SOUTHWEST 1/4 OF SECTION 15-23-27 AS BEING AN ASSUMED BEARING OF NORTH 89°41'25" EAST.

| | | | |
|-----------------|-------------------|----------------------|-----|
| JOB NO. _____ | 98043 | CALCULATED BY: _____ | EGT |
| DATE: _____ | 5/23/06 | DRAWN BY: _____ | EGT |
| SCALE: _____ | 1 INCH = 300 FEET | CHECKED BY: _____ | JLR |
| FIELD BY: _____ | N/A | | |

CURVE AND LINE TABLES

EXHIBIT "B"

| LINE TABLE | | |
|------------|--------|-------------|
| LINE | LENGTH | BEARING |
| L1 | 18.42 | N60°45'51"W |
| L2 | 15.11 | N11°33'55"E |
| L3 | 44.53 | N74°21'47"E |
| L4 | 48.66 | N35°45'00"E |
| L5 | 39.79 | S55°01'57"E |
| L6 | 50.12 | N57°18'37"E |
| L7 | 49.00 | N10°47'32"E |
| L8 | 47.65 | N07°43'09"W |
| L9 | 32.56 | N11°19'13"E |
| L10 | 30.30 | N02°56'51"E |
| L11 | 37.41 | N16°11'32"E |
| L12 | 66.28 | N05°39'55"W |
| L13 | 53.58 | N03°06'54"W |
| L14 | 32.36 | N01°48'42"W |
| L15 | 47.52 | N04°23'50"W |
| L16 | 47.25 | N04°14'53"W |
| L17 | 59.68 | N04°04'09"W |
| L18 | 47.08 | N03°21'54"W |
| L19 | 58.82 | N02°50'50"W |
| L20 | 56.25 | N07°38'49"W |
| L21 | 84.45 | N10°42'38"W |
| L22 | 69.87 | N10°32'05"W |
| L23 | 41.90 | N06°55'02"W |
| L24 | 29.72 | N15°09'03"W |
| L25 | 82.12 | N10°14'41"W |
| L26 | 70.34 | N10°07'59"W |
| L27 | 118.50 | N10°23'51"W |

| LINE TABLE | | |
|------------|--------|-------------|
| LINE | LENGTH | BEARING |
| L28 | 93.06 | N09°24'40"W |
| L29 | 20.25 | N89°40'21"E |
| L30 | 89.69 | S09°24'40"E |
| L31 | 118.38 | S10°23'51"E |
| L32 | 70.37 | S10°07'59"E |
| L33 | 81.24 | S10°14'41"E |
| L34 | 30.31 | S15°09'03"E |
| L35 | 42.70 | S06°55'02"E |
| L36 | 69.21 | S10°32'05"E |
| L37 | 84.95 | S10°42'38"E |
| L38 | 57.62 | S07°38'49"E |
| L39 | 59.56 | S02°50'50"E |
| L40 | 46.87 | S03°21'54"E |
| L41 | 59.53 | S04°04'09"E |
| L42 | 47.20 | S04°14'53"E |
| L43 | 47.94 | S04°23'50"E |
| L44 | 32.59 | S01°48'42"E |
| L45 | 33.38 | S03°06'54"E |
| L46 | 44.38 | N70°42'51"E |
| L47 | 44.38 | S70°42'51"W |
| L48 | 44.86 | N74°54'28"W |
| L49 | 19.03 | N72°54'52"W |
| L50 | 29.22 | N05°01'42"W |
| L51 | 39.17 | N78°06'10"E |
| L52 | 78.32 | N40°30'50"E |
| L53 | 61.16 | N20°53'36"W |
| L54 | 37.05 | N60°45'51"W |

| CURVE TABLE | | | | | |
|-------------|--------|---------|-----------|--------|---------------|
| CURVE | LENGTH | RADIUS | DELTA | CHORD | CHORD BEARING |
| C1 | 82.11 | 766.54 | 6°08'13" | 82.07 | N67°38'44"E |
| C2 | 69.09 | 631.00 | 6°16'24" | 69.05 | N73°51'03"E |
| C3 | 21.96 | 35.00 | 35°56'49" | 21.60 | S57°08'53"W |
| C4 | 48.00 | 624.00 | 4°24'26" | 47.99 | S72°55'04"W |
| C5 | 399.96 | 759.54 | 30°10'16" | 395.36 | S55°37'43"W |
| C6 | 523.99 | 1178.00 | 25°29'10" | 519.68 | S53°17'10"W |

SHEET 4 OF 4



16 East Plant Street
Winter Garden, Florida 34787 (407) 854-5355

SURVEYOR'S NOTES:

98043D\SKETCHES\SK SC-4.DWG

1. THIS IS NOT A SURVEY.
2. THIS SKETCH IS NOT VALID WITHOUT THE SIGNATURE AND ORIGINAL RAISED SEAL OF A FLORIDA LICENSED SURVEYOR AND MAPPER.
3. BEARINGS SHOWN HEREON ARE BASED ON THE NORTH LINE OF THE SOUTHWEST 1/4 OF SECTION 15-23-27 AS BEING AN ASSUMED BEARING OF NORTH 89°41'25" EAST.

| | |
|---------------------------------|---------------------------|
| JOB NO. <u>98043</u> | CALCULATED BY: <u>EGT</u> |
| DATE: <u>5/23/06</u> | DRAWN BY: <u>EGT</u> |
| SCALE: <u>1 INCH = 300 FEET</u> | CHECKED BY: <u>JLR</u> |
| FIELD BY: <u>N/A</u> | |