

RESOLUTION NO. 86-M-45

A RESOLUTION APPROVING A MAP OF RIGHT-OF-WAY RESERVATION FOR HIAWASSEE ROAD FROM OLD WINTER GARDEN ROAD TO STATE ROAD 50.

WHEREAS, Section 336.02, Florida Statutes, as amended, invests the commissioners of a county with the general superintendence and control of county roads within its county; and

WHEREAS, Section 336.02 authorizes the commissioners to establish new roads and change or discontinue old roads; and

WHEREAS, consistent with these powers, Section 336.02 authorizes the commissioners to approve maps of right-of-way reservation for any road within the county's jurisdiction.

NOW, THEREFORE, BE IT HEREBY RESOLVED BY THE BOARD OF COUNTY COMMISSIONERS OF ORANGE COUNTY, FLORIDA:

1. The right-of-way reservation map for Hiawassee Road from Old Winter Garden Road to State Road 50, which is attached hereto and incorporated herein as Exhibit "A", is approved.

2. This Resolution shall become effective on the date of its adoption.

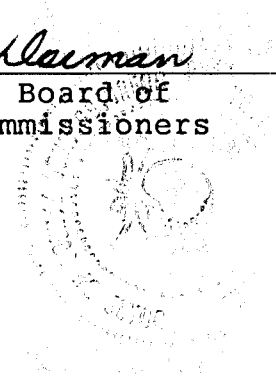
ADOPTED THIS 3RD DAY OF NOVEMBER, 1986.

ORANGE COUNTY, FLORIDA

By: Tom Deaman
Chairman, Board of
County Commissioners

ATTEST: THOMAS H. LOCKER, Clerk
to the Board of County Commissioners

By: Mary Jo Garrison
Deputy Clerk



Return to Clerk to BCC - 5th Floor, County Administration Building - Beverly

1
2
3
4
5
6
7
8
9
10
11
12
13
14
15
16
17
18
19
20
21
22
23
24
25
26
27
28
29
30
31
32
33
34
35
36

COUNTY CONTROLLER, ORANGE COUNTY, FLORIDA

FILED FOR RECORD IN THE OFFICE OF THE COUNTY CONTROLLER FOR THE COUNTY OF ORANGE, FLORIDA, THIS 25th DAY OF DECEMBER, 1988.

MEMBER OF THE BOARD OF COUNTY COMMISSIONERS

John S. ...

APPROVAL: THIS MAP WAS PREPARED UNDER PROVISIONS OF SECTION 236.02 FLORIDA STATUTES OF 1984.

I HEREBY CERTIFY THAT THIS RIGHT OF WAY RESERVATION... RECOMMENDED BY CHAPTER 211M-4 F.A.C. EFFECTIVE SEPTEMBER 1, 1981.

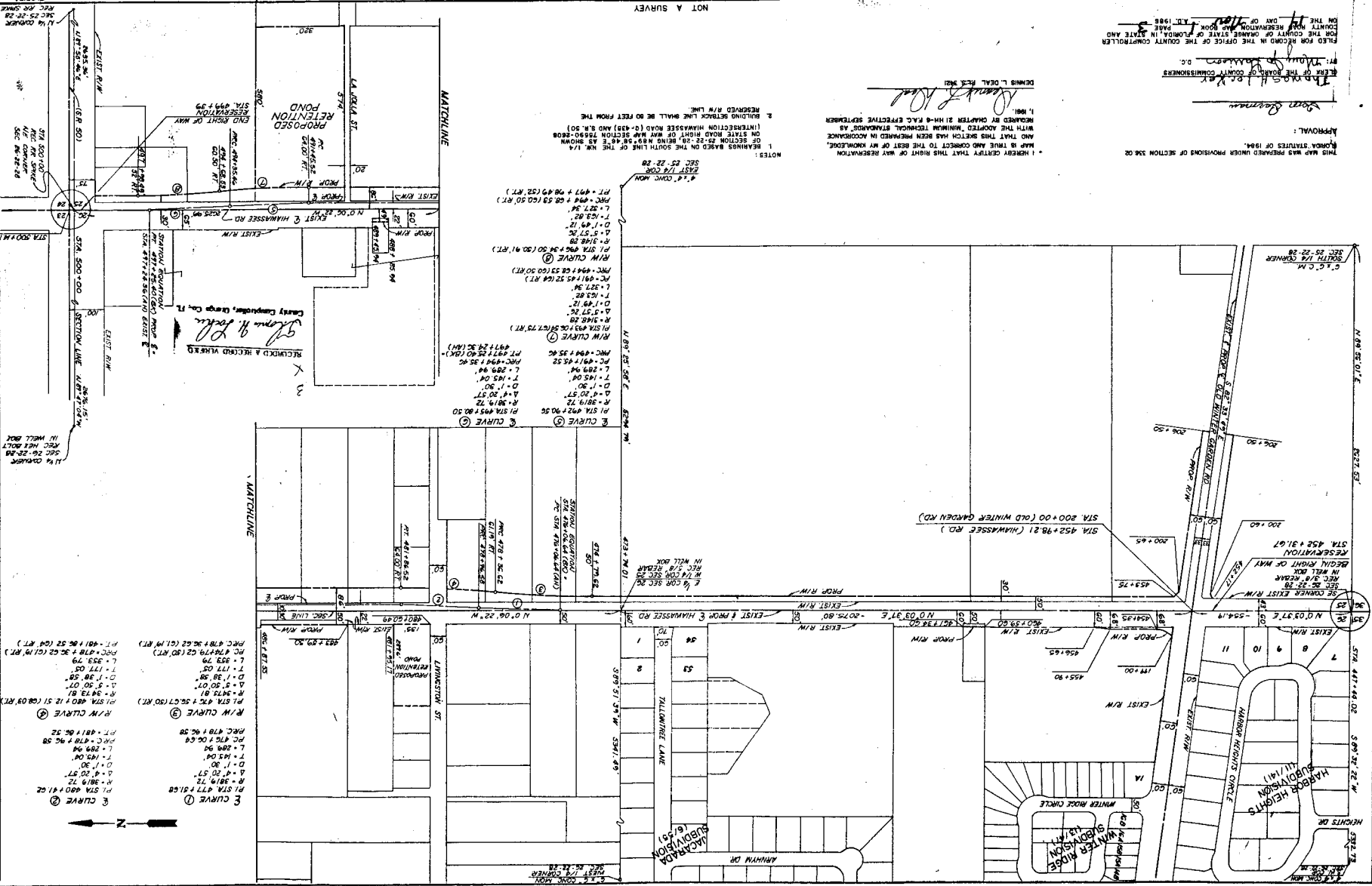
Table with columns: DATE BY, CHECKED BY, DTD, APPROVED BY, RLB.

NOT A SURVEY

Simplot Associates INCORPORATED



RIGHT-OF-WAY RESERVATION MAP FOR PROPOSED IMPROVEMENTS TO HIWASSEE ROAD SECTION 25 & 26, T22S, R28E



NOTES: 1. BEARINGS BASED ON THE SOUTH LINE OF THE WM 1/4 OF SECTION 25-26, BEING N89°47'45.85" W, AS SHOWN ON STATE ROAD RIGHT OF WAY MAP SECTION 25-26-28-30.

Curve data and bearings for various sections of the road, including Curve 1 and Curve 2.

Matchlines and other technical details on the left side of the plan.