

C.R. Box 500  
R. Ap. B. Box 950

C-166

Florida	Paid	THOMAS H. LOCKER,
Rec Fee	\$ 100.00	Orange County,
Doc Tax	\$	Comptroller
Int Tax	\$	By <u>WJL</u>
Total	\$ 100.00	Deputy Clerk

2667515 ORANGE CO. FL.  
08:23:20AM 12/29/86

OR3847 PG1987

RESOLUTION NO. 86-M-55

RETURN TO CLERK'S OFFICE - BCC - 5TH FLOOR - COUNTY ADMINISTRATION BUILDING - ATTN: DIANA

1  
2  
3  
4  
5  
6  
7  
8  
9  
10  
11  
12  
13  
14  
15  
16  
17  
18  
19  
20  
21  
22  
23  
24  
25  
26  
27  
28  
29  
30  
31  
32  
33  
34  
35  
36

A RESOLUTION APPROVING A MAP OF RIGHT-OF-WAY RESERVATION FOR CLARCONA-OCOEE ROAD FROM EDGEWATER DRIVE TO HIAWASSEE ROAD.

WHEREAS, Section 336.02, Florida Statutes, as amended, invests the commissioners of a county with the general superintendence and control of county roads within its county; and

WHEREAS, Section 336.02 authorizes the commissioners to establish new roads and change or discontinue old roads; and

WHEREAS, consistent with these powers, Section 336.02 authorizes the commissioners to approve maps of right-of-way reservation for any road within the county's jurisdiction.

NOW, THEREFORE, BE IT HEREBY RESOLVED BY THE BOARD OF COUNTY COMMISSIONERS OF ORANGE COUNTY, FLORIDA:

1. The right-of-way reservation map for Clarcona-Ocoee Road from Edgewater Drive to Hiawassee Road, which is attached hereto\* and incorporated herein as Exhibit "A", is approved.

2. This Resolution shall become effective on the date of its adoption.

ADOPTED THIS 15<sup>th</sup> DAY OF Dec., 1986.

ORANGE COUNTY, FLORIDA

By: Ken Trending  
Chairman, Board of  
County Commissioners

ATTEST: THOMAS H. LOCKER, Clerk  
to the Board of County Commissioners

By: Mary J. Garrison  
Deputy Clerk

APPROVED BY THE BOARD OF COUNTY  
COMMISSIONERS AT THEIR MEETING  
DEC 15 1986

JDP13 11/10/86 WPPLUS

RECORDED & RECORD VERIFIED  
Thomas H. Locker  
County Comptroller, Orange Co., FL

\* See: State and County Road Reservation Map  
Book 1, Pages 4 through 11, Public  
Records, Orange County, Florida.

(over)

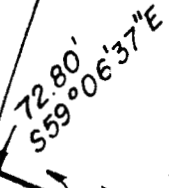
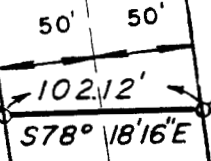
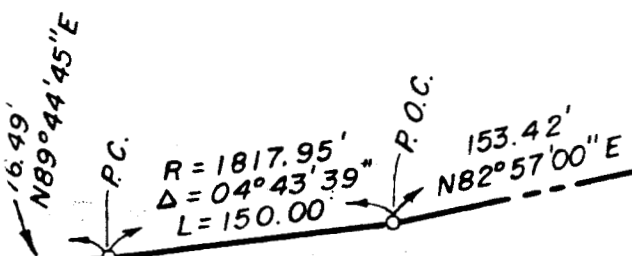
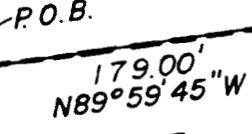
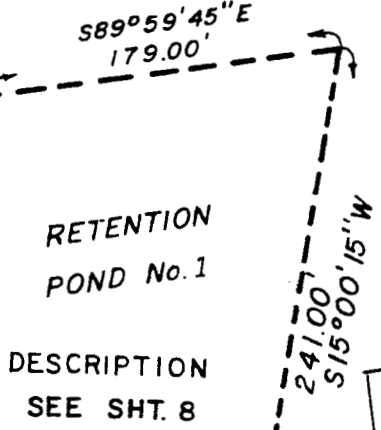
-S, R-28-E

NW CORNER  
SW 1/4  
SEC. 36-21-28

*Unrecorded  
Copy  
b/c  
2/15/86  
NOT FILMED*

WEST LINE, SW 1/4

NW CORNER  
SW 1/4, SW 1/4  
SEC. 36-21-28



OEE ROAD

304.52'

503.97'

98

36

N 1/4, SECTION 36, T-21-S, R-28-E

NOT PLATTED

Officially recorded copy NOT FILMED

B20  
12/15/02

