

Florida Rec Fee \$ 35.00
 Doc Tax \$
 Int Tax \$
 Total \$ 35.00

THOMAS H. LOCKER,
 Orange County
 Comptroller
 By [Signature]
 Deputy Clerk

2706375 ORANGE CO. FL.
 02:51:20PM 02/19/87

RESOLUTION NO. 87-M-03 **OR3863 PG0750**

A RESOLUTION APPROVING A MAP OF RIGHT-OF-WAY RESERVATION FOR OLD WINTER GARDEN ROAD FROM KIRKMAN ROAD TO HIAWASSEE ROAD.

WHEREAS, Section 336.02, Florida Statutes, as amended, invests the commissioners of a county with the general superintendence and control of county roads within its county; and

WHEREAS, Section 336.02 authorizes the commissioners to establish new roads and change or discontinue old roads; and

WHEREAS, consistent with these powers, Section 336.02 authorizes the commissioners to approve maps of right-of-way reservation for any road within the county's jurisdiction.

NOW, THEREFORE, BE IT HEREBY RESOLVED BY THE BOARD OF COUNTY COMMISSIONERS OF ORANGE COUNTY, FLORIDA:

1. The right-of-way reservation map for Old Winter Garden Road from Kirkman Road to Hiawassee Road, which is attached hereto and incorporated herein as Exhibit "A"; is approved.

2. This Resolution shall become effective on the date of its adoption.

ADOPTED THIS 9th DAY OF Feb., 1986.

ORANGE COUNTY, FLORIDA

By: [Signature]
 Chairman, Board of
 County Commissioners

ATTEST: THOMAS H. LOCKER, Clerk
 to the Board of County Commissioners

By: [Signature]
 Deputy Clerk

APPROVED BY THE BOARD OF COUNTY COMMISSIONERS AT THEIR MEETING
FEB 09 1987

RECORDED & RECORD VERIFIED
[Signature]
 County Comptroller, Orange Co., FL

JDP26 12/29/86 WPPLUS

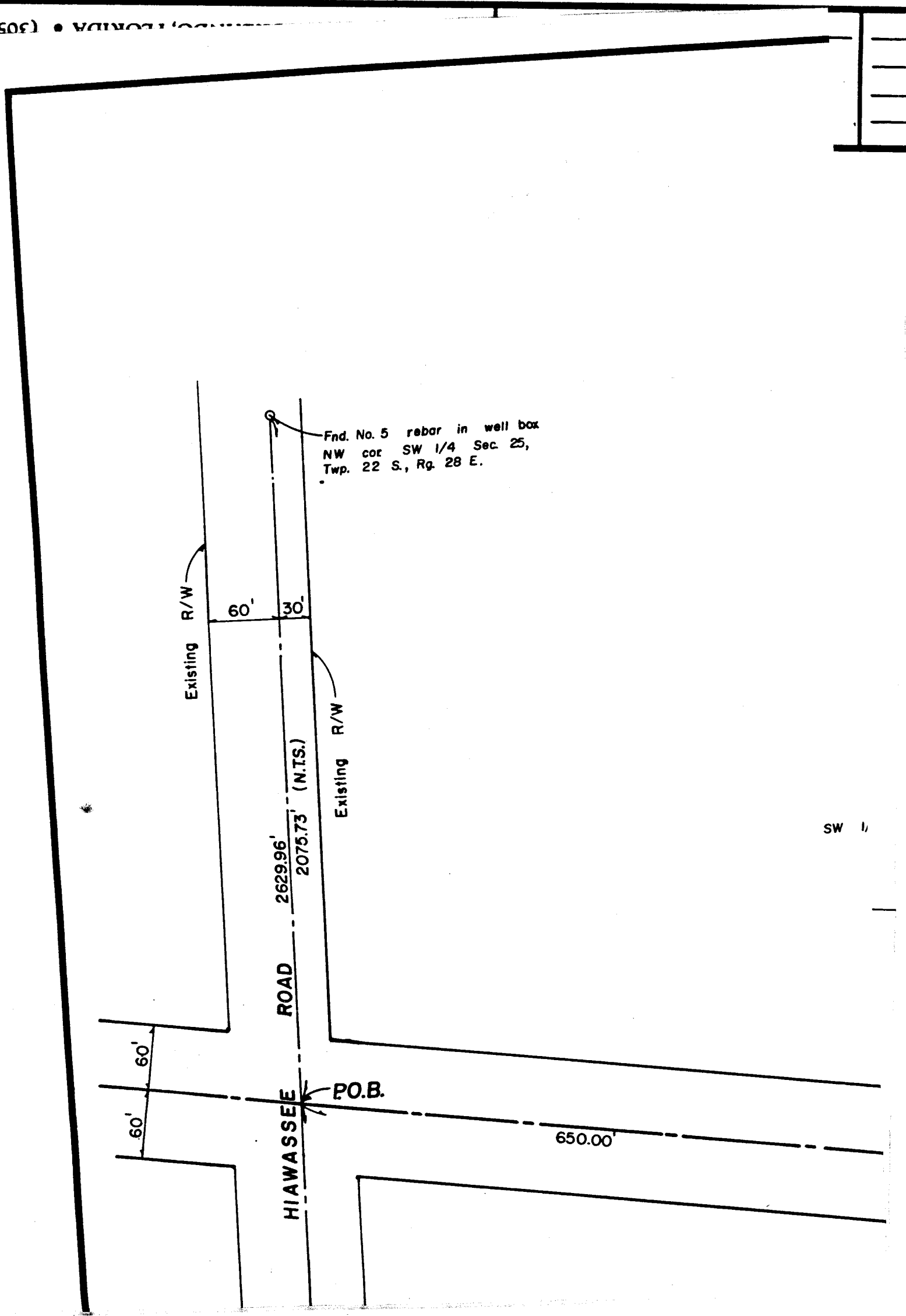
RETURN TO CLERK'S OFFICE - BCC - 5TH FLOOR - COUNTY ADMINISTRATION BUILDING - ATTN: DIANA

* See: State and County Road Reservation Map Book 1, pages 12 and 13

1
2
3
4
5
6
7
8
9
10
11
12
13
14
15
16
17
18
19
20
21
22
23
24
25
26
27
28
29
30
31
32
33
34
35
36

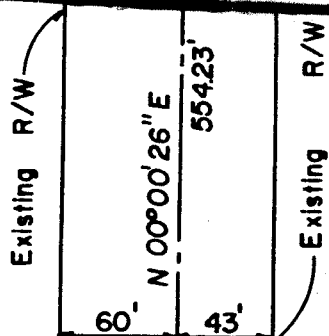
①

(305) • FLORIDA •



SW 1/4

②



Fnd. No. 5 rebar in well box
 SW cor. Sec. 25, Twp. 22 S.,
 Rg. 28 E.

This Map was prepared under Provisions of Section 336.02
 Florida Statutes of 1984.

APPROVAL:

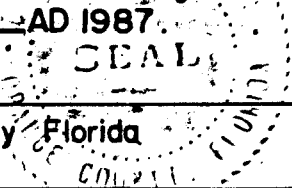
2-9-87

Thomas H. Locker
 Clerk of the Board of County Commissioners

BY: Mary Jo Garrison D.C.

Filed for Record in The Office of The County Comptroller
 For The County of Orange, State of Florida, in State and
 County Road Reservation Map Book 1 Pages 12-13
 on the 19th Day of FEBRUARY AD 1987.

Thomas H. Locker
 County Comptroller, Orange County Florida



					DESIGNED <u>W.E.B.</u>
					DRAWN <u>J.A.W.</u>
					CHECKED <u>W.E.B.</u>
NO.	DATE	REVISION	BY	APPR'D.	

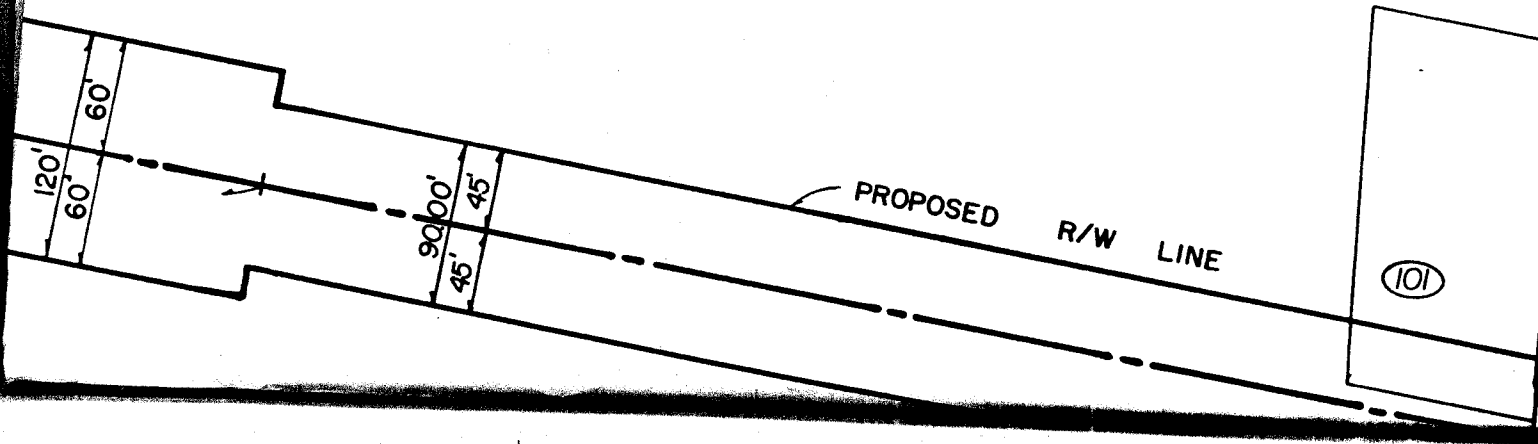
140213

③

M.E.B.
J.A.W.
M.E.B.

1/4 of SW 1/4

⑩



PROPOSED R/W LINE

⑩

④

PROPOSED
R/W LINE

100

South line of Sec. 25

N 89° 52' 19" E

2627.52'

Blount Sikes & Ass

Consulting Civil Engineers & S
ORLANDO, FLORIDA • (305)

JANSEN STREET

AVENUE

12	13					
11	14					
10	15					
9	16					
8	17					
7	18					
6	19					
5	20					
BLK B						
1	2	3	4	21		
		(103)		24	23	22
					(104)	

BOULEVARD

13	14					
12	15					
11	16					
10	17					
9	18					
8	19					
7	20					
6	21					
5	22					
BLK C						
1	2	3	4	23		
		(105)			(106)	
				26	25	24

AVENUE

14		
13		
12		
11		
10		
9		
8		
7		
6		
5		
BLK D		
1	2	3

ORDS VISTA HEIGHTS ADD L-75

(16)

(107)

5920' E

OLD

WINTER

3376.42'

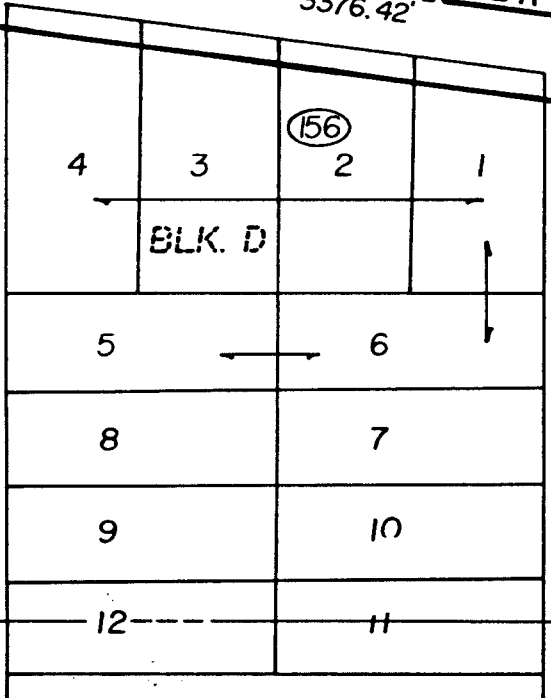
GARDEN

ROAD

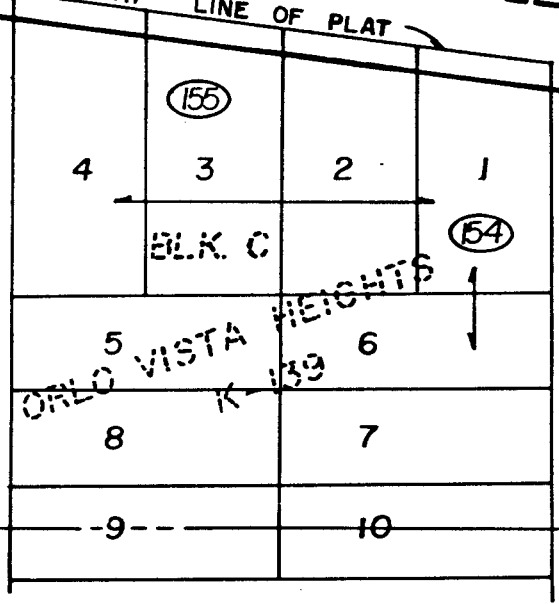
NORTH LINE OF PLAT

90.00'

LANCELOT



HART



VIISTA

BUENA

(153)

4

5

8

NOTE:

- 1. All building right of wa
- 2. Bearings are 1/4 of Sec assumed b

OLD WINTER GARDEN ROAD
SECTION 25, T. 22S., R. 28E.
ORANGE COUNTY, FLORIDA

ES

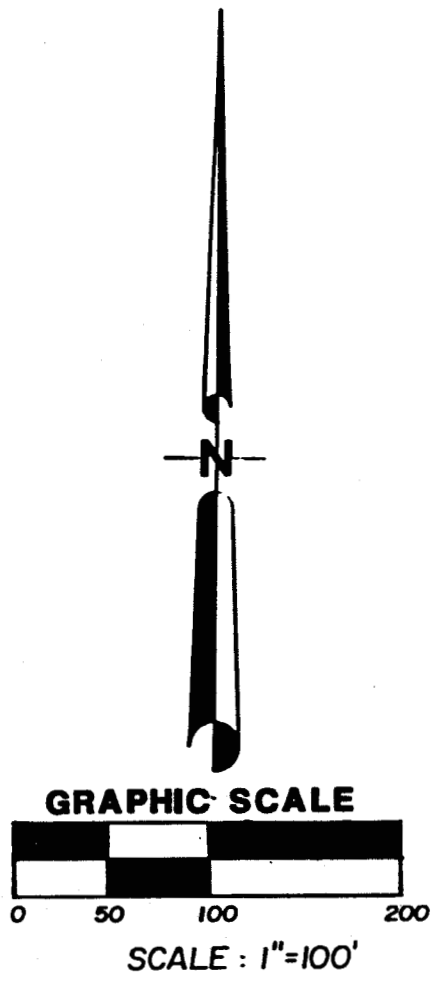
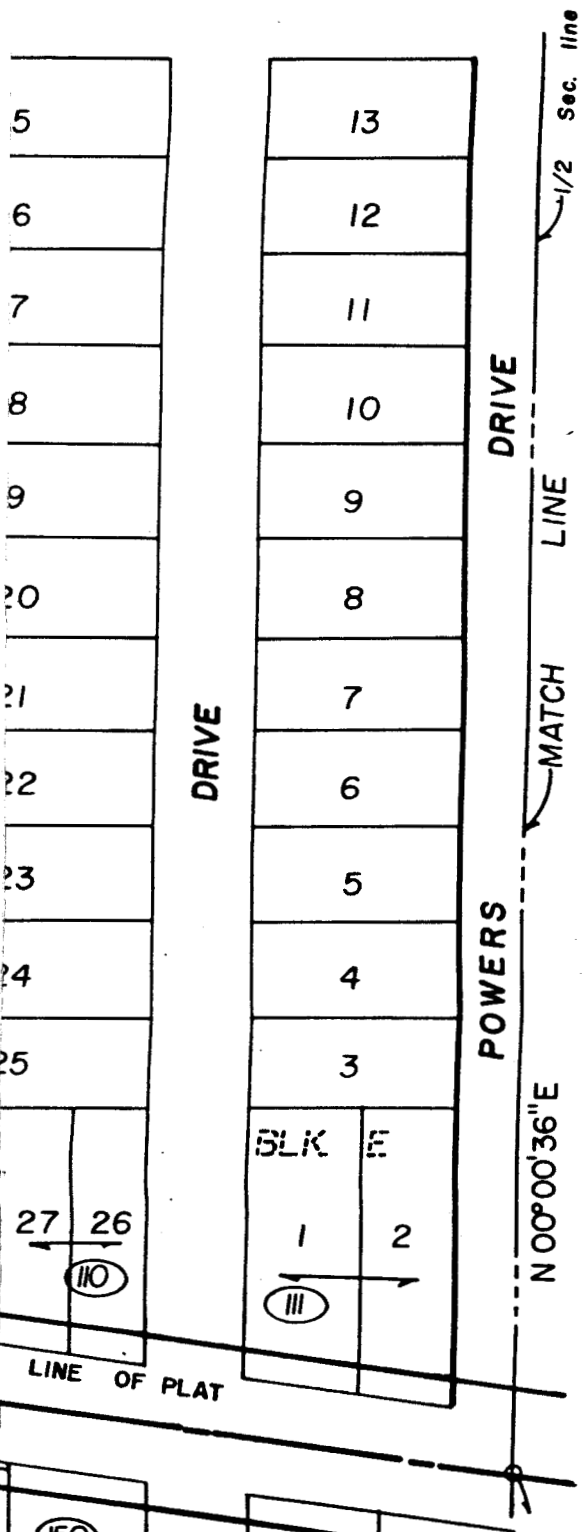
7

F.A. PROJECT No.:

SHEET 1 OF 2 SHEETS

STATE AND COUNTY ROAD RESERVATION MAP BOOK 1

PAGE 12



27 26

(110)

1 2

(111)

200

SCALE: 1"=100'

LINE OF PLAT

(150)

1

OBSERVATORY

(149)

2

(148)

1

BLK. A

209.69'

3

Fnd. 5'x 5' C.M. with brass disk stamped 1/4 25/36

SW Cor. SE 1/4 Sec. 25-22-28

be 50 feet from the lines shown hereon. West line of the SW. 28E. as having an 0°00' 26" E.

I HEREBY CERTIFY THAT THIS RIGHT-OF-WAY RESERVATION MAP IS TRUE AND CORRECT TO THE BEST OF MY KNOWLEDGE, AND THAT THIS SKETCH HAS BEEN PREPARED IN ACCORDANCE WITH THE ADOPTED "MINIMUM TECHNICAL STANDARDS" AS REQUIRED BY CHAPTER 21HH-6 F.A.C. EFFECTIVE SEPTEMBER 1, 1986.

BLOUNT SIKES & ASSOCIATES

BY: *Wesley E. Blount* 7/21/88
WESLEY E. BLOUNT
FLA. P.L.S. NO. 2700

NOT A SURVEY

EXHIBIT 'A'

OF WAY RESERVATION MAP

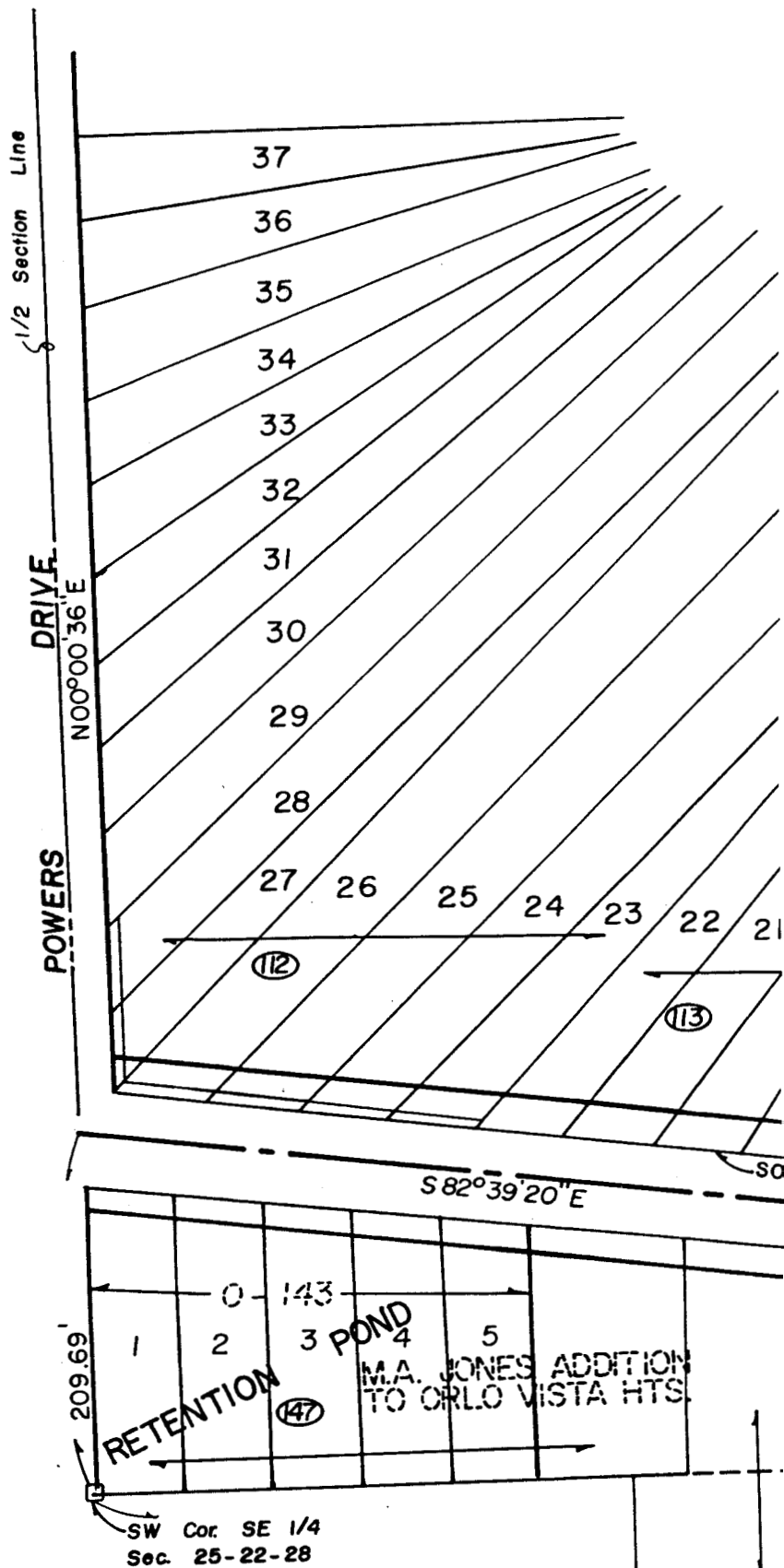
DATE
OCT. 1986

PROJECT NO.
84028.03

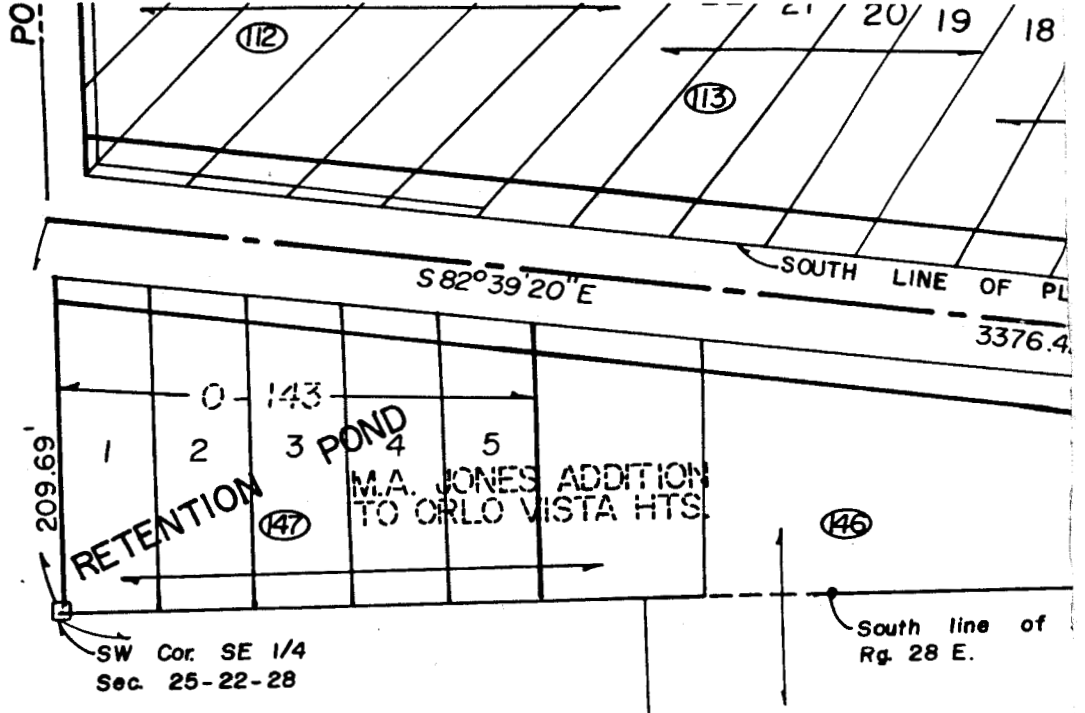
SCALE
AS SHOWN

SHEET NO.
OF 2 1

(i)



(2)

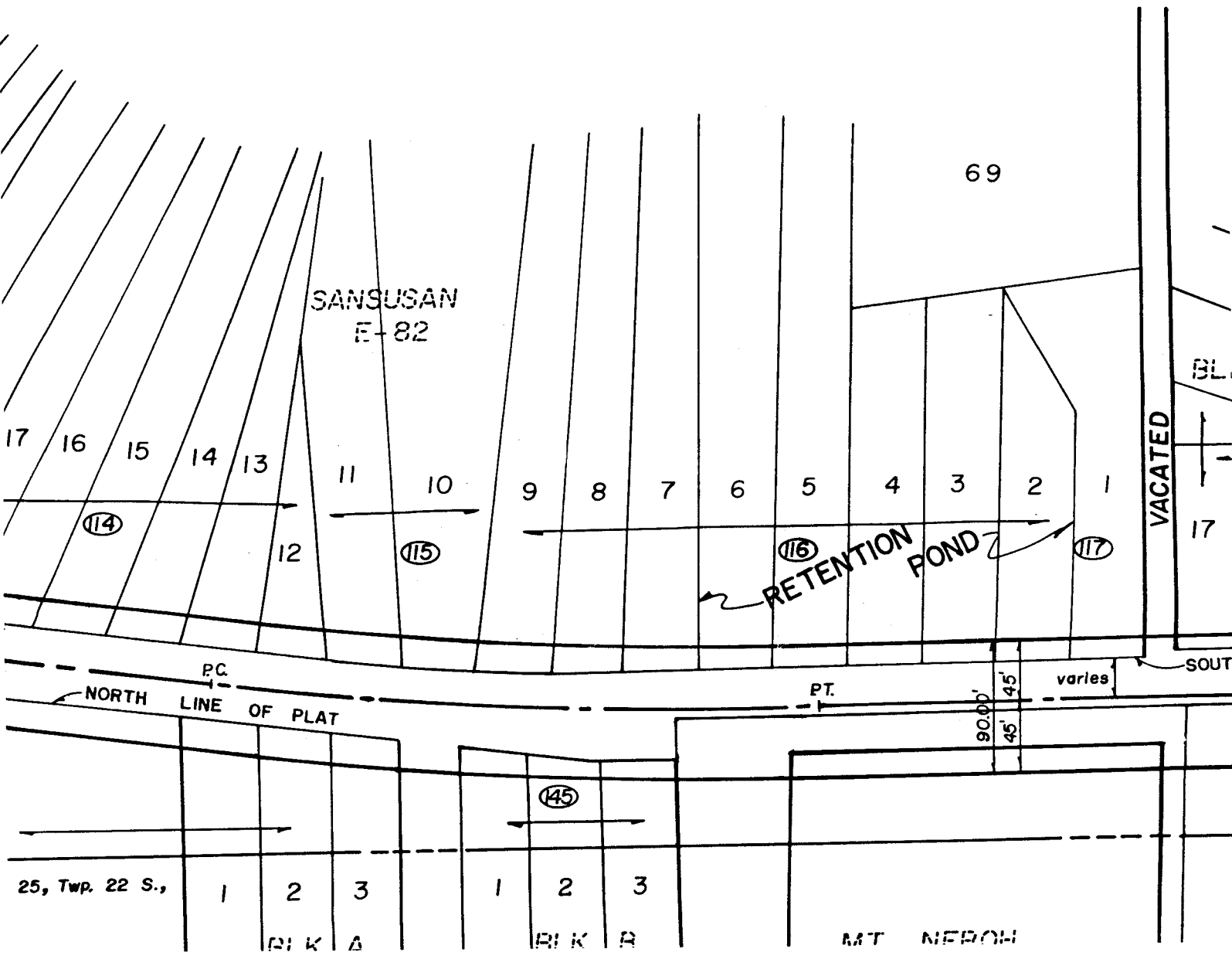
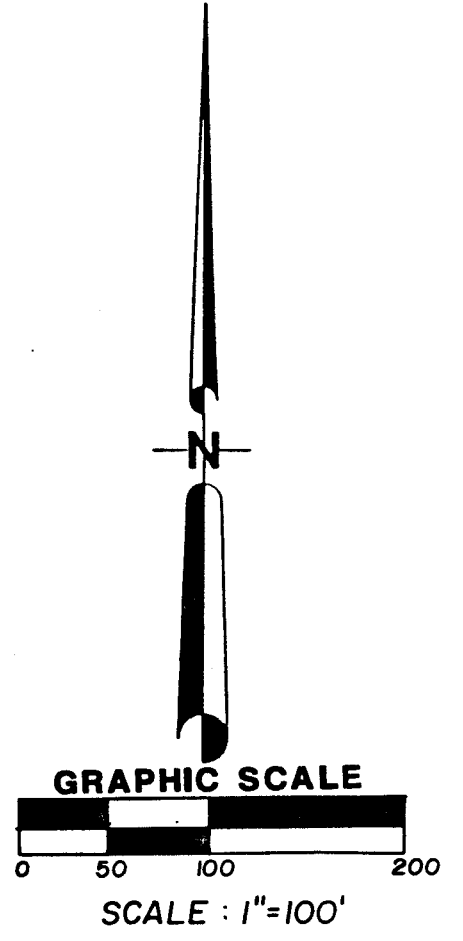


Centerline Curve Data

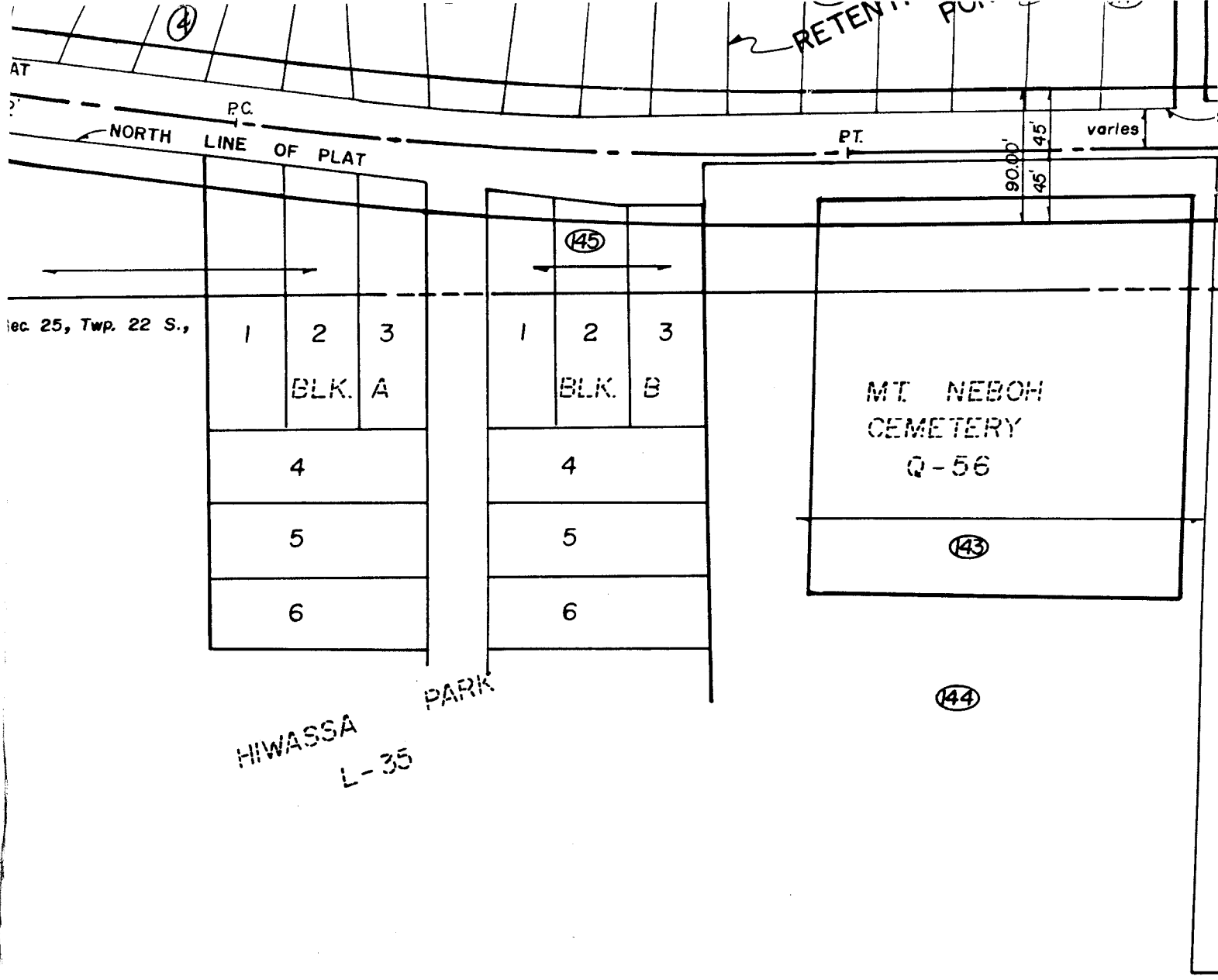
$\Delta = 07^{\circ}59'55''$
 $R = 2864.79'$
 $A = 399.93'$
 $CH = 399.61'$
 $T = 200.29'$

					DESIGNED <u>W.E.B.</u>
					DRAWN <u>J.A.W.</u>
					CHECKED <u>W.E.B.</u>
NO.	DATE	REVISION	BY	APPR'D.	

44313



RETEN... PU...



Sec 25, Twp. 22 S.,

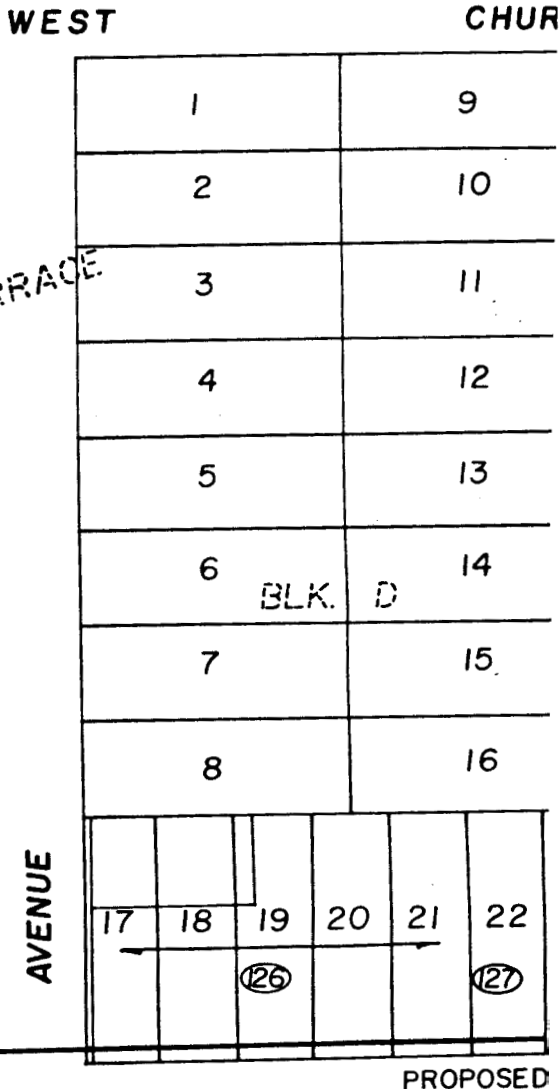
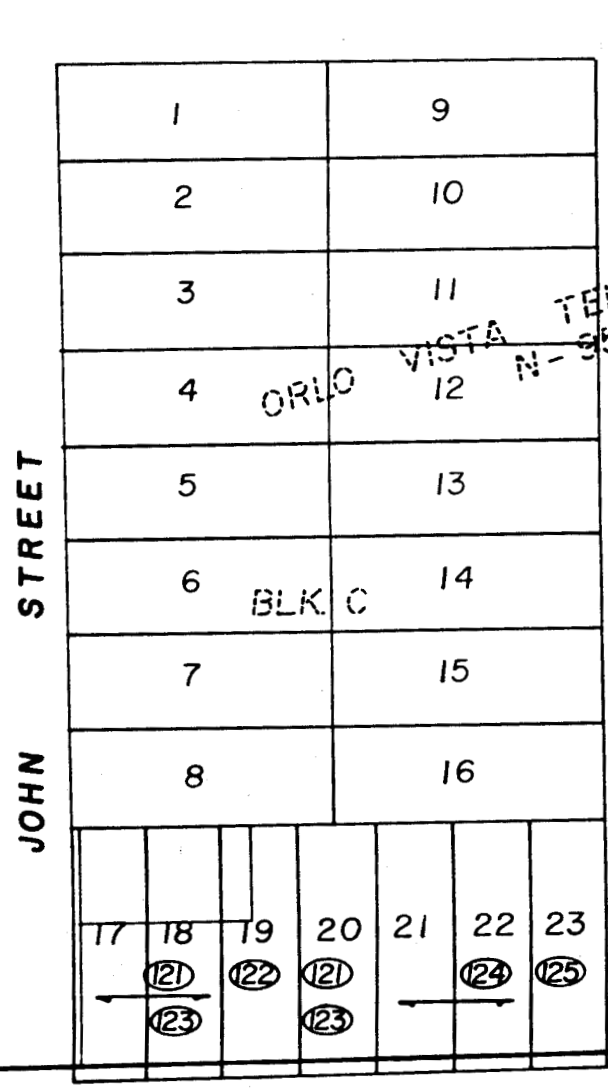
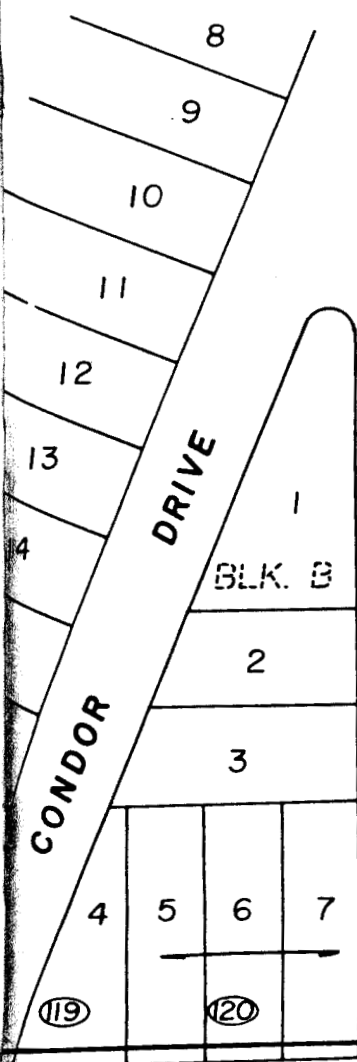
HIWASSA
L-35

PARK

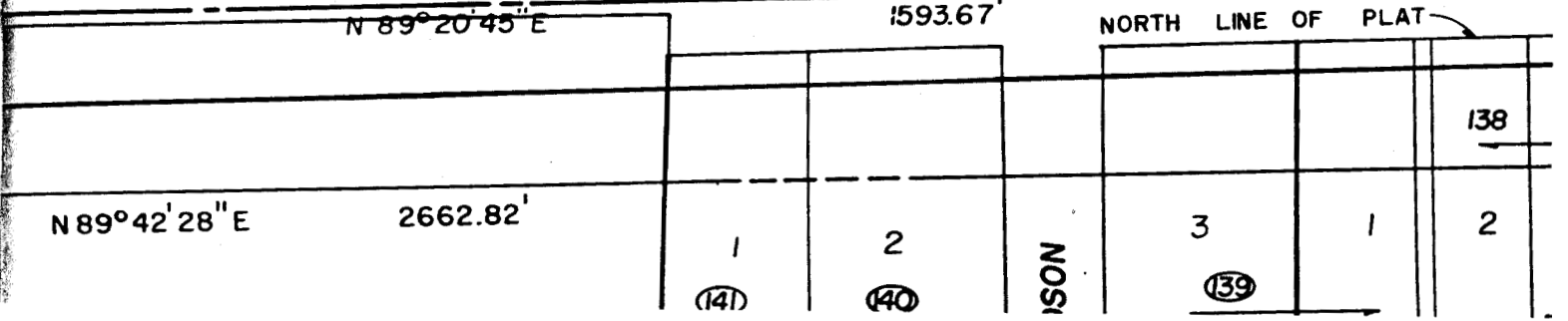
Blount Sikes & Assoc

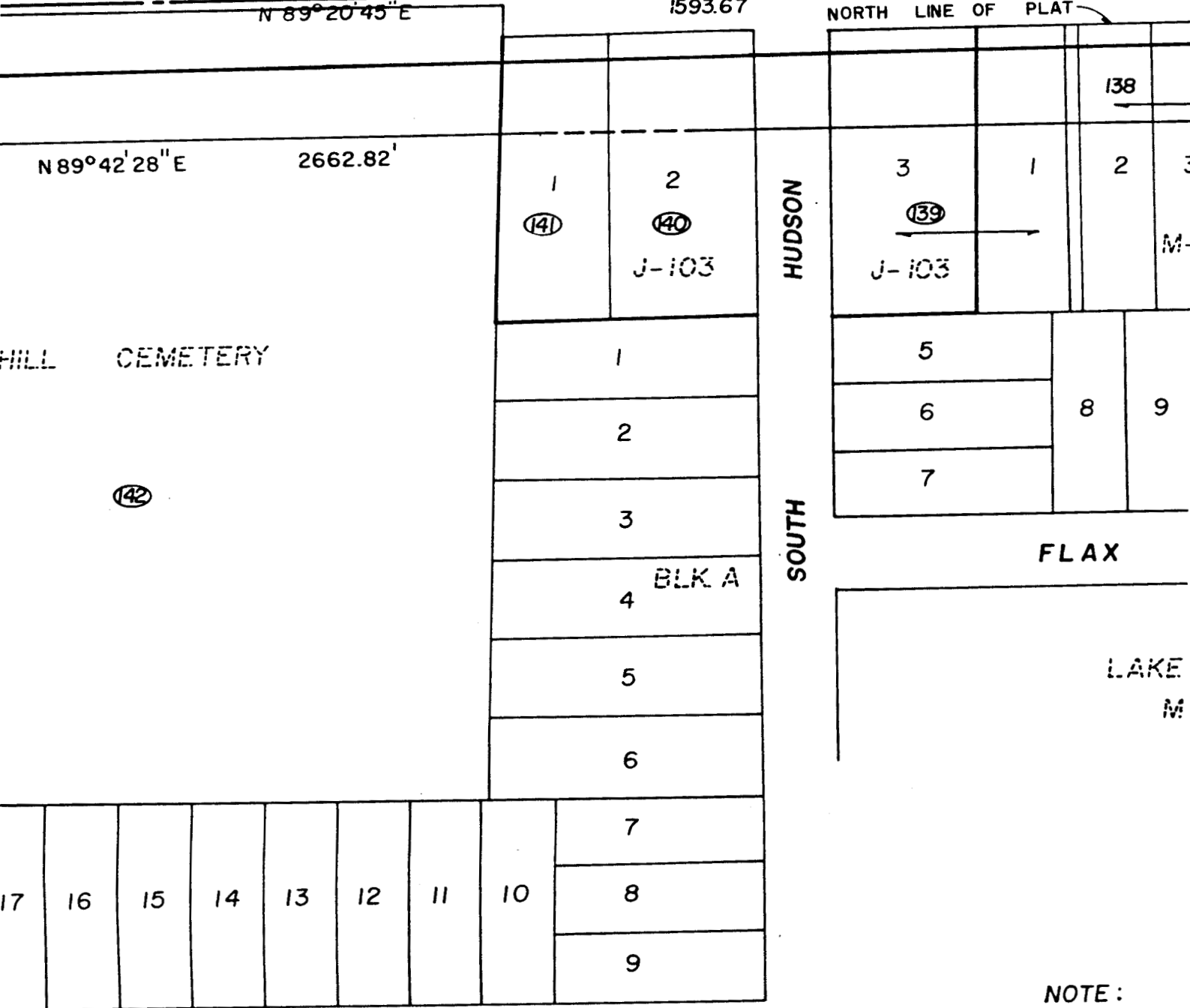
Consulting Civil Engineers & Surveyors
ORLANDO, FLORIDA • (305) 8...

3



PLAT OLD WINTER GARDEN ROAD PROPOSED





NOTE:
All building
right of way

OLD WINTER GARDEN ROAD
ORANGE COUNTY, FLORIDA

9

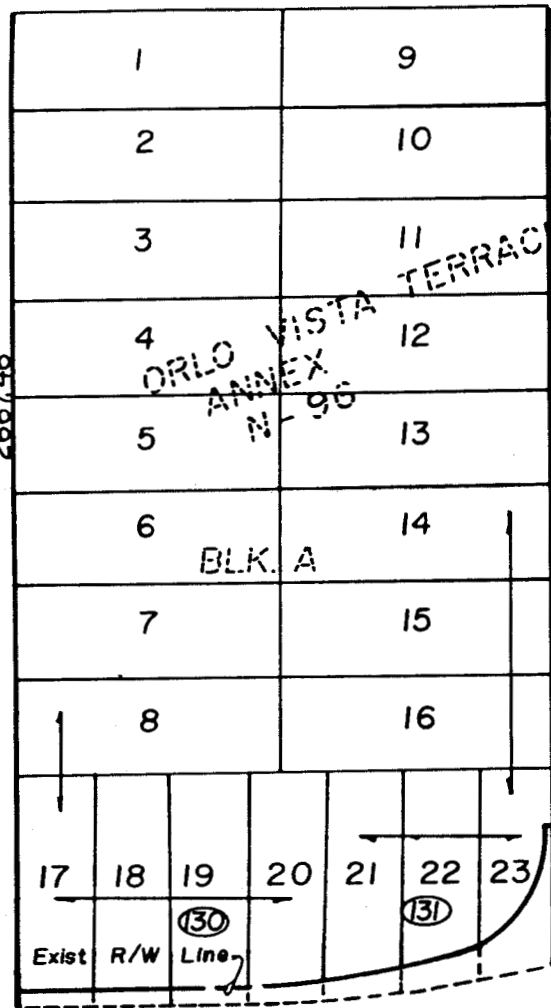
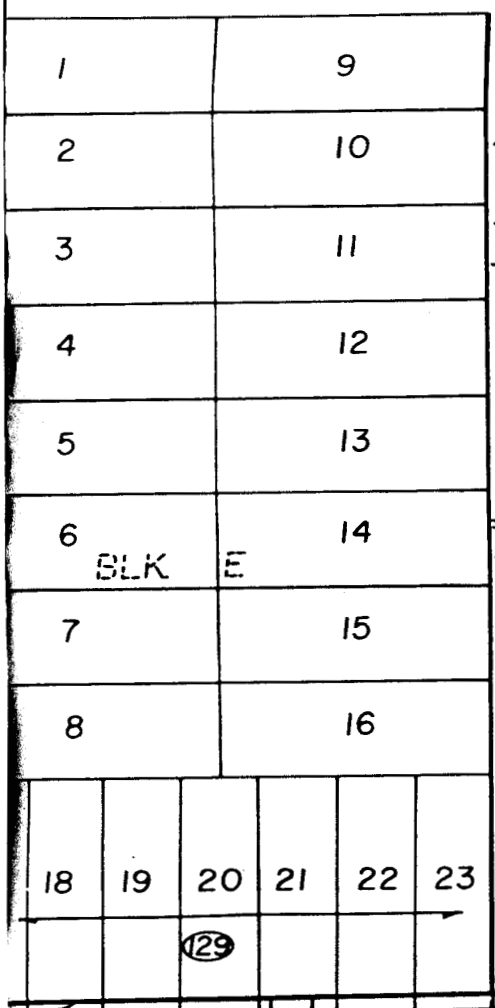
Fnd. 4x4 C.M. no number
East 1/4 cor. Sec. 25, Twp.
22 S., Rg. 28 E.

AVENUE

East Line Sec. 25

N 00°06'15" E 2566.46' (N.T.S.)

HASTINGS AVENUE 2667.46'



(S.R. 435)

ROAD

KIRKMAN

P.O.T.

90.00
45'

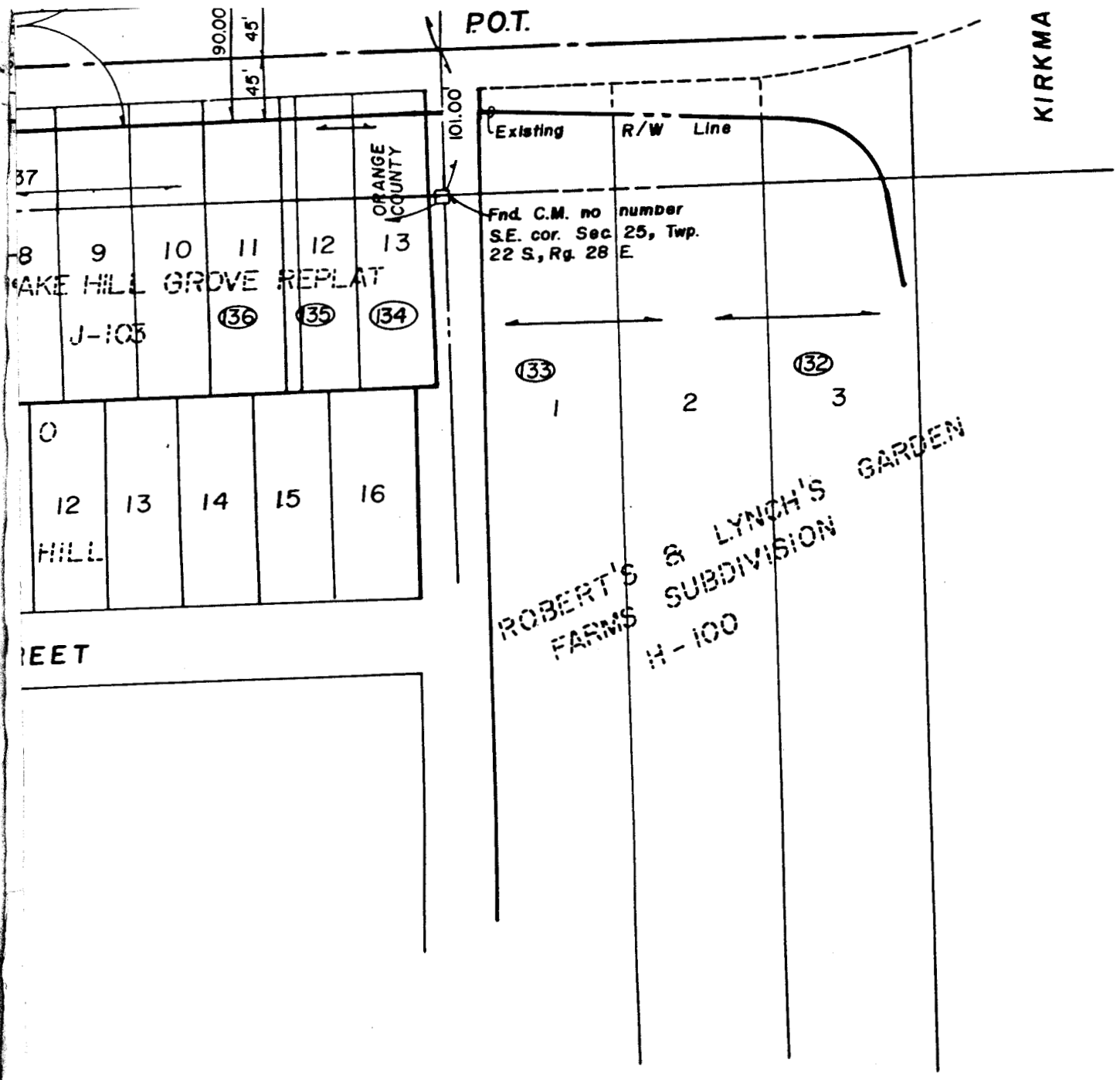
101.00

Existing R/W Line

Fnd. C.M. no number
S.E. cor. Sec. 25, Twp.
22 S., Rg. 28 E.

KE HILL GROVE REPLAT

(136) (135) (134)



FEET

All be 50 feet from lines shown hereon.

NOT A SURVEY

OF WAY RESERVATION MAP

DATE	OCT. 1986	PROJECT NO.	84028.03
SCALE	AS SHOWN	SHEET NO.	2
		OF	2