

JUN 19 1989

MJG/MS0008E
06/02/89

RESOLUTION NO. 89-R-01

THE FOLLOWING RESOLUTION WAS ADOPTED AT
THE REGULAR MEETING OF THE BOARD OF
COUNTY COMMISSIONERS OF ORANGE COUNTY,
FLORIDA, ON THE 19th DAY OF June, 1989

WHEREAS, the safe, efficient and uninterrupted transportation of people and property from place to place on the County Road System of Orange and Seminole Counties and the State Road System within both Counties is a matter of great concern to the residents of the Counties; and

WHEREAS, the proper planning of future transportation facilities within Orange and Seminole Counties is of utmost concern; and

WHEREAS, it is beneficial and desirable that vehicular traffic within any transportation facility in developed or developing areas of the Counties be planned to accommodate travel demands for the next twenty (20) years and beyond to increase the safety of travel and decrease congestion within and upon such facilities; and

WHEREAS, McCulloch Road is a proposed major project in Orange and Seminole Counties; and

WHEREAS, the implementation of this project will provide greater accessibility to the University of Central Florida ("UCF"); and

WHEREAS, the four laning of McCulloch Road will require a perpetual easement for McCulloch Road (and a temporary construction easement) from UCF; and

WHEREAS, the Board of County Commissioners of Orange County, Florida desires to adopt this Resolution for the purpose of requesting that UCF provide a perpetual easement for McCulloch Road (and a temporary construction easement) along a portion of UCF's property that abuts McCulloch Road; and

WHEREAS, the legal descriptions of the perpetual easement for McCulloch Road (and the temporary construction easement) are attached hereto as composite Exhibit "A".

Return to Clerk's Office - O.C.C. - 5th Floor, Co. Admin. Bldg. - Beverly C.

Rec Fee \$	<u>21.00</u>	MARTHA O. HAYNIE,
Add Fee \$	<u>3.00</u>	Orange County
Doc Tax \$	_____	Comptroller
Int Tax \$	_____	By <u>MB</u>
Total \$	<u>24.00</u>	Deputy Clerk

3285732 ORANGE CO. FL.
08:52:00AM 06/29/89

OR 409380021

NOW, THEREFORE, BE IT RESOLVED BY THE BOARD OF COUNTY COMMISSIONERS OF ORANGE COUNTY, FLORIDA;

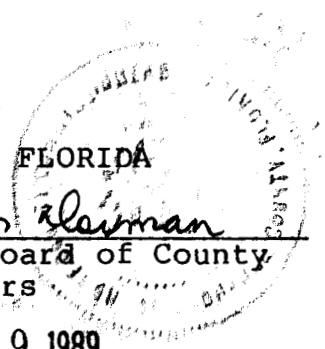
1. THAT UCF is requested to provide a perpetual easement for McCulloch Road (and a temporary construction easement) as shown on composite Exhibit "A".

ADOPTED this 19th day of June, 1989.

ORANGE COUNTY, FLORIDA

By: Tom Klaiman
Chairman, Board of County Commissioners

DATE: JUN 19 1989



ATTEST:

Martha O. Haynie, Clerk of the Board of County Commissioners

By: Paul M. Steph
Asst. Deputy Clerk

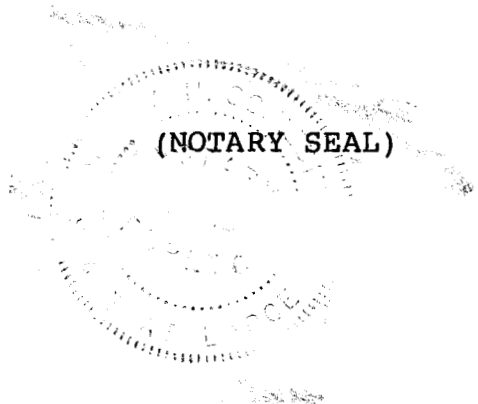
STATE OF FLORIDA
COUNTY OF ORANGE

Before me personally appeared Tom Dorman and Rosilyn M. Stapleton to me well known and known to me to be the Chairman and Asst. Deputy Clerk to the Orange County Board of County Commissioners who executed the foregoing instrument for the purposes therein expressed.

WITNESS my hand and official seal this 20th day of June, 1989.

Roy S. Phidling
Notary Public
State of Florida at Large
My Commission Expires:

NOTARY PUBLIC, STATE OF FLORIDA,
MY COMMISSION EXPIRES: MAR. 26, 1993,
BONDED THRU NOTARY PUBLIC UNDERWRITERS



OR 093 PG 0522

SKETCH OF DESCRIPTION

ADDITIONAL RIGHT-OF-WAY FOR McCULLOCH ROAD

DESCRIPTION:

A portion of the Northwest 1/4 of Section 2, Township 22 South, Range 31 East, Orange County, Florida, described as follows:

Commence at the Northwest corner of said Section 2 and run S 89°11'38" E along the North line of the Northwest 1/4 of said Section 2 for a distance of 1666.29 feet; then run S 00°48'22" W for a distance of 40.00 feet to the Point of Beginning; then continue S 00°48'22" W for a distance of 20.00 feet; then run S 89°11'38" E along the South line of the North 60.00 feet of said Northwest 1/4 for a distance of 185.04 feet; then run S 00°48'22" W for a distance of 25.00 feet; then run S 89°11'38" E for a distance of 150.00 feet; then run N 00°48'22" E for a distance of 25.00 feet; then run S 89°11'38" E for a distance of 403.00 feet; then run S 00°48'22" W for a distance of 20.00 feet; then run S 89°11'38" E for a distance of 20.00 feet; then run N 00°48'22" E for a distance of 20.00 feet; then run S 89°11'38" E for a distance of 229.78 feet; then run N 00°32'45" E along the East line of said Northwest 1/4 for a distance of 20.00 feet; then run N 89°11'38" W along the South line of the North 40.00 feet of said Northwest 1/4 and the South Right-of-Way line of McCulloch Road for a distance of 987.73 feet to the Point of Beginning.

Being subject to any rights-of-way, restrictions, and easements of record.

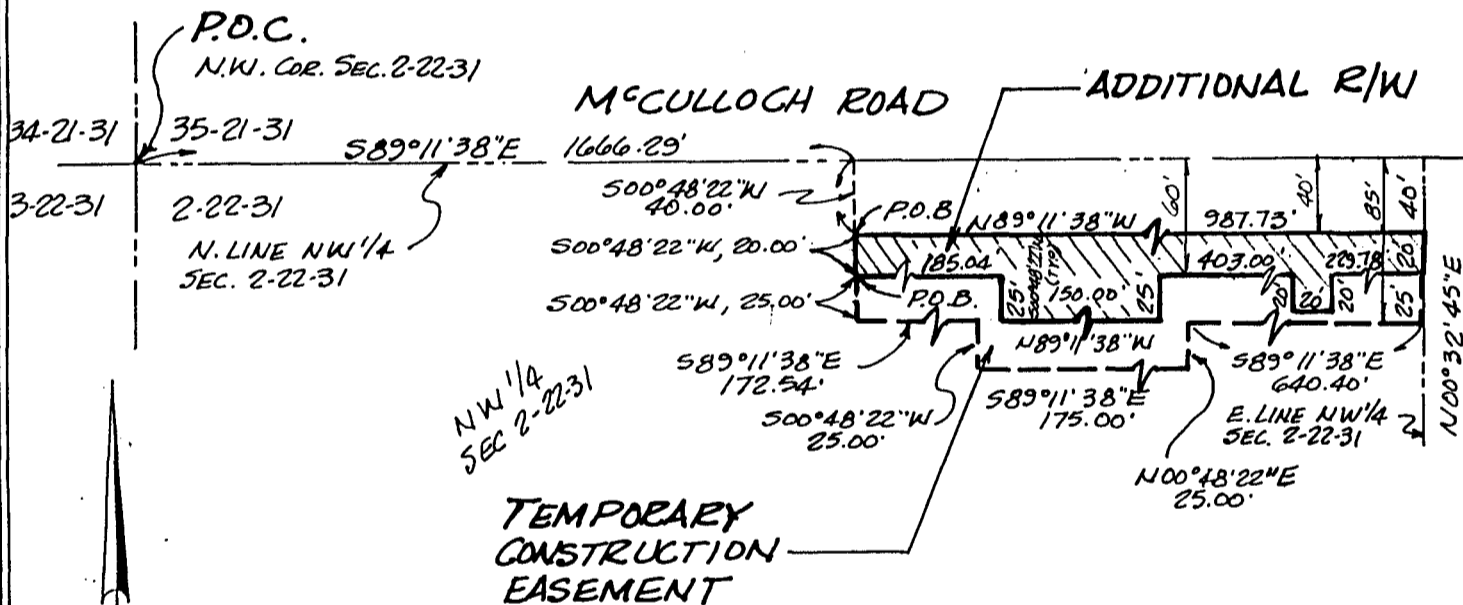
TEMPORARY CONSTRUCTION EASEMENT ALONG McCULLOCH ROAD

DESCRIPTION:

A portion of the Northwest 1/4 of Section 2, Township 22 South, Range 31 East, Orange County, Florida, described as follows:

Commence at the Northwest corner of said Section 2 and run S 89°11'38" E along the North line of the Northwest 1/4 of said Section 2 for a distance of 1666.29 feet; then run S 00°48'22" W for a distance of 60.00 feet to the Point of Beginning; then continue S 00°48'22" W for a distance of 25.00 feet; then run S 89°11'38" E for a distance of 172.54 feet; then run S 00°48'22" W for a distance of 25.00 feet; then run S 89°11'38" E for a distance of 175.00 feet; then run N 00°48'22" E for a distance of 25.00 feet; then run S 89°11'38" E for a distance of 640.40 feet; then run N 00°32'45" E along the East line of said Northwest 1/4 for a distance of 25.00 feet; then run N 89°11'38" W along the South line of the North 60.00 feet of said Northwest 1/4 for a distance of 229.78 feet; then run S 00°48'22" W for a distance of 20.00 feet; then run N 89°11'38" W for a distance of 20.00 feet; then run N 00°48'22" E for a distance of 20.00 feet; then run N 89°11'38" W for a distance of 403.00 feet; then run S 00°48'22" W for a distance of 25.00 feet; then run N 89°11'38" W for a distance of 150.00 feet; then run N 00°48'22" E for a distance of 25.00 feet; then run N 89°11'38" W for a distance of 185.04 feet to the Point of Beginning.

Being subject to any rights-of-way, restrictions and easements of record.



NOTES:

- THIS IS NOT A SURVEY.
- BEARINGS BASED ON THE NORTH LINE OF THE NW 1/4 OF SEC. 2-22-31 AS BEING S 89°11'38" E (ASSUMED MERIDIAN).

I hereby certify that this sketch meets or exceeds "Minimum Technical Standards" set forth by the Florida Board of Professional Land Surveyors in Chapter 21HH-6.006(1), Florida Administrative Code, pursuant to Section 472.027, Florida Statutes.

DONALD W. McINTOSH ASSOCIATES, INC.

Keith Ruddick
 Keith Ruddick P.L.S. #2617
 State of Florida

NOT VALID UNLESS SEALED

PREPARED FOR: <h2 style="text-align: center; margin: 0;">UNIVERSITY ESTATES</h2>		DATE: 6-1-89 BY: KR DESCRIPTION: REVISED DESCRIPTIONS	
McCULLOCH ROAD SEC. 2-22-31 ORANGE Co.		REVISIONS	
DONALD W. McINTOSH ASSOCIATES INC. ENGINEERS PLANNERS SURVEYORS 2200 PARK AVENUE NORTH, WINTER PARK, FLORIDA 32789 644-4068		FIELD BOOK _____ PG _____ SURVEY _____ FOUNDATION _____ FINAL _____	
DRAWN BY: KR DATE: 3-28-89	CHECKED BY: KR DATE: 3-28-89	JOB NO. 88189.0165	SCALE 1" = 100'
SHEET 1 OF 1		DATE: 3-28-89	

UNIVERSITY ESTATES
ADDITIONAL RIGHT-OF-WAY
FOR McCULLOCH ROAD

DESCRIPTION:

A portion of the Northwest 1/4 of Section 2, Township 22 South, Range 31 East, Orange County, Florida, described as follows:

Commence at the Northwest corner of said Section 2 and run S 89°11'38" E along the North line of the Northwest 1/4 of said Section 2 for a distance of 1666.29 feet; thence run S 00°48'22" W for a distance of 40.00 feet to the Point of Beginning; thence continue S 00°48'22" W for a distance of 20.00 feet; thence run S 89°11'38" E along the South line of the North 60.00 feet of said Northwest 1/4 for a distance of 185.04 feet; thence run S 00°48'22" W for a distance of 25.00 feet; thence run S 89°11'38" E for a distance of 150.00 feet; thence run N 00°48'22" E for a distance of 25.00 feet; thence run S 89°11'38" E for a distance of 403.00 feet; thence run S 00°48'22" W for a distance of 20.00 feet; thence run S 89°11'38" E for a distance of 20.00 feet; thence run N 00°48'22" E for a distance of 20.00 feet; thence run S 89°11'38" E for a distance of 229.78 feet; thence run N 00°32'45" E along the East line of said Northwest 1/4 for a distance of 20.00 feet; thence run N 89°11'38" W along the South line of the North 40.00 feet of said Northwest 1/4 and the South Right-of-Way line of McCulloch Road for a distance of 987.73 feet to the Point of Beginning.

Being subject to any rights-of-way, restrictions, and easements of record.

UNIVERSITY ESTATES
TEMPORARY CONSTRUCTION EASEMENT
ALONG McCULLOCH ROAD

DESCRIPTION:

A portion of the Northwest 1/4 of Section 2, Township 22 South, Range 31 East, Orange County, Florida, described as follows:

Commence at the Northwest corner of said Section 2 and run S 89°11'38" E along the North line of the Northwest 1/4 of said Section 2 for a distance of 1666.29 feet; thence run S 00°48'22" W for a distance of 60.00 feet to the Point of Beginning; thence continue S 00°48'22" W for a distance of 25.00 feet; thence run S 89°11'38" E for a distance of 172.54 feet; thence run S 00°48'22" W for a distance of 25.00 feet; thence run S 89°11'38" E for a distance of 175.00 feet; thence run N 00°48'22" E for a distance of 25.00 feet; thence run S 89°11'38" E for a distance of 640.40 feet; thence run N 00°32'45" E along the East line of said Northwest 1/4 for a distance of 25.00 feet; thence run N 89°11'38" W along the South line of the North 60.00 feet of said Northwest 1/4 for a distance of 229.78 feet; thence run S 00°48'22" W for a distance of 20.00 feet; thence run N 89°11'38" W for a distance of 20.00 feet; thence run N 00°48'22" E for a distance of 20.00 feet; thence run N 89°11'38" W for a distance of 403.00 feet; thence run S 00°48'22" W for a distance of 25.00 feet; thence run N 89°11'38" W for a distance of 150.00 feet; thence run N 00°48'22" E for a distance of 25.00 feet; thence run N 89°11'38" W for a distance of 185.04 feet to the Point of Beginning.

Being subject to any rights-of-way, restrictions and easements of record.

RECORDED & RECORD VERIFIED

Martha O. Haynie
County Comptroller, Orange Co., FL