

Case No. VA-15-08-062

Board of County Commissioners

October 20, 2015

AERIAL



Google earth

PICTURES OF SURROUNDING AREA







Google earth
© 2015 Google





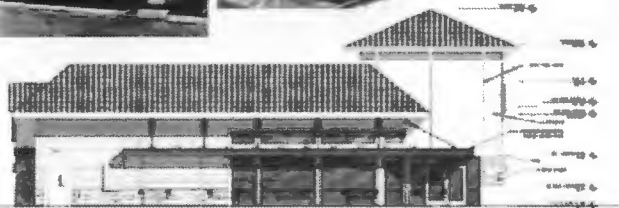
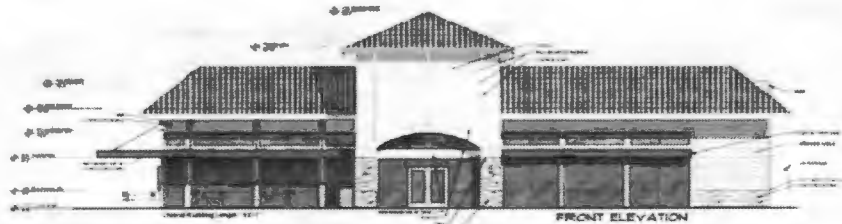
BACKGROUND

- Planned Development substantial change approved - June 5, 2012
- Agreement with County approved - May 5, 2015
- Development Review Committee approved - August 12, 2015

PLANNED DEVELOPMENT SITE PLAN



STORE ELEVATIONS

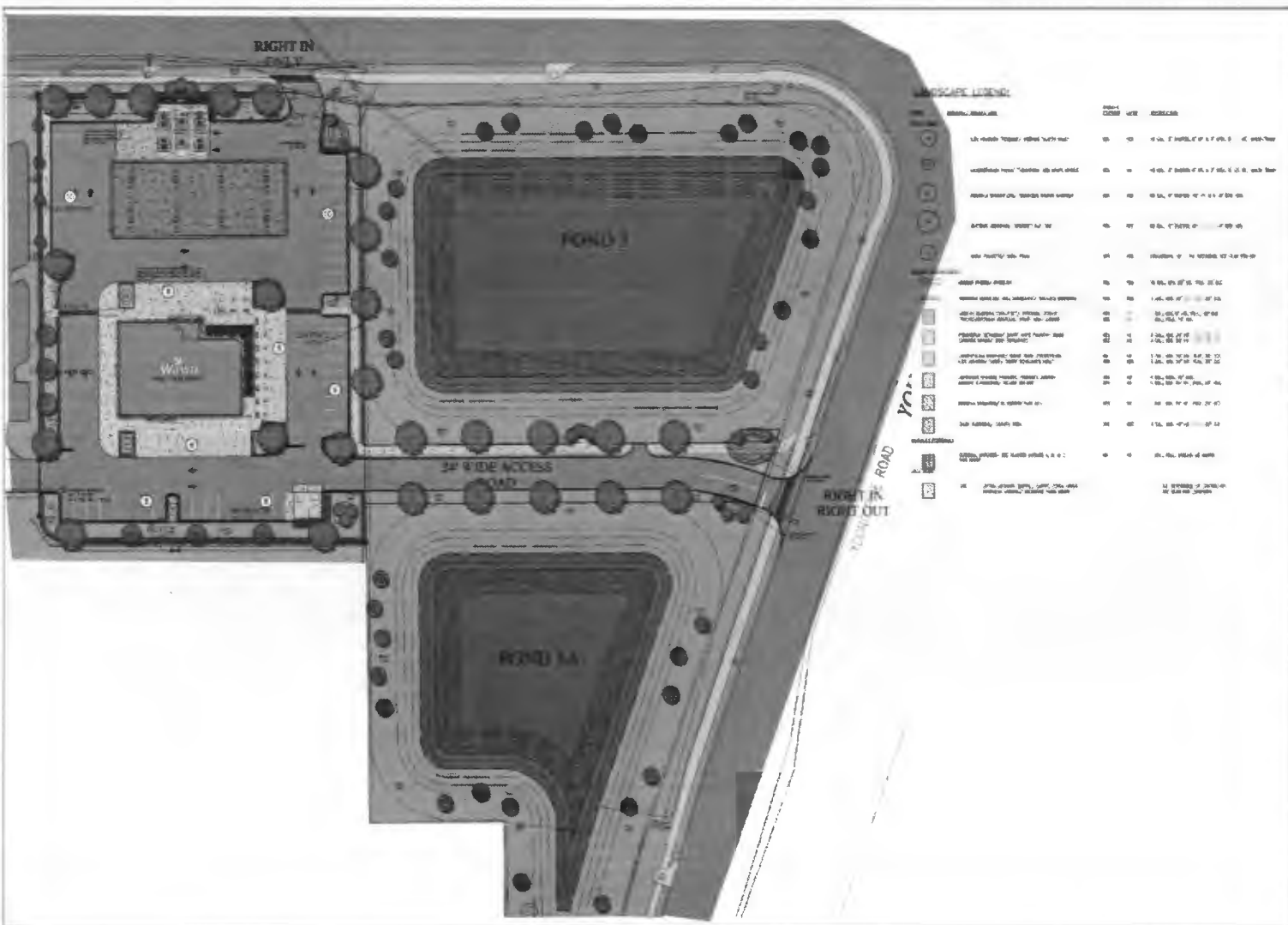


Floor Concrete Slab James Hinkle Terra Group	Source Concrete Manager 4385	Tile James Hinkle Archie White 2940-20	Cladding Robert Taylor Robert Taylor 2940-20
Metal Door Raymond Moore White Oakwood 888 2721-80	Window Raymond Moore White Oakwood 888 2721-80	Ice Storage Raymond Moore Howard Walker QC-1	



WAWA F85FBL
 Curry Ford Rd. & Young Pine Rd. Orlando, FL • C&P Project #2150130 • 07/08/2015

LANDSCAPE PLAN



LANDSCAPE LEGEND

SYMBOL	PLANT	QUANTITY	LOCATION
[Symbol]	Large shrub	10	Along Pond I
[Symbol]	Medium shrub	20	Along Pond II
[Symbol]	Small shrub	50	Along Access Road
[Symbol]	Tree	100	Perimeter
[Symbol]	Grass	5000	Open Areas
[Symbol]	Water	2 Ponds	Pond I, Pond II
[Symbol]	Building	1	Center
[Symbol]	Road	1	Young Road
[Symbol]	Access Road	1	24' Wide Access Road
[Symbol]	Driveway	1	Building Driveway
[Symbol]	Walkway	1	Perimeter

DATE: 11/15/11
SCALE: 1/8" = 1'-0"

LANDSCAPE DEVELOPMENT PLAN

Curry Ford & Young Pine

AGREEMENT WITH COUNTY: DEVELOPER'S OBLIGATIONS

- Traffic Signal at Curry Ford Road and River Ridge Drive
- Stormwater Pond Maintenance (pond and landscape) (County owned pond)
- Funds for Crosswalk at Young Pine
- Enhanced Pond Landscape/Amenities
- Easement back to County for ROW across Wawa Parcel

REQUEST

WAWA
Orlando, Florida

Celebrating 46 Years of Quality Manufacturing and Service

46



D/T Monument Sign Primary Display 35.33 Sq. Ft.

1" X 2'-3"
Line Price Display
HL-3000-8-01

SCALE: 3/4" = 1'-0"

THOMAS
SIGN & AWNING CO. INC.
4501 18TH Avenue North
Clearwater, Florida 33762
800-526-3325
www.thomassign.com

WAWA
Buyer: Lumpy
SPEC A SIGN
Install at: Wawa
Carrier: Tom & Ted
Young Pine Rd
Orlando, Florida
00000
TNA: []
MU: []
AIA: []

2017 MCS Warranty
Vadonors
ELECTRIC SIGN
1 Year
1 OF 1

SPECIAL CIRCUMSTANCES

- Limitation on Size:
 - Allowed 122sf for one sign
 - Proposed limitation 96sf for both signs
- Limitation on Height:
 - Allowed 8'
 - Proposed 6'
- Neighborhood Improvements
- Neighborhood Outreach